

Frame aluminium table 80x80x74

by Ramón Esteve

Frame, outdoor collection by Ramon Esteve, comes from generating serene and timeless shapes using the framework as elementary geometry. The endless possibilities offered by the material using advanced technology, was the motivation to explore the limits.

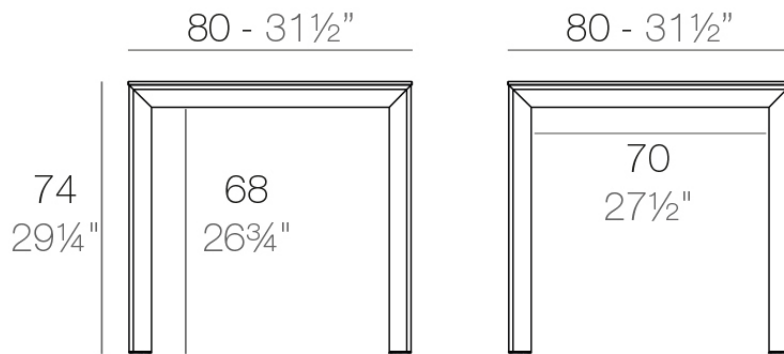


Info

Description

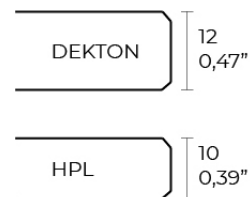
Extruded aluminum with cast lacquered aluminum base. HPL Table top ó Dekton Table top. Item suitable for indoor and outdoor use. HPL Table top.

Weight: 16.78 Kg



FRAME Mesa 80x80cm

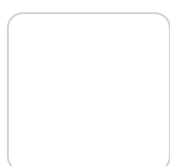
FRAME Dinning Table 31 1/2" x 31 1/2"



Finishes

finishes

ALUMINIUM
Ref. 54232FM



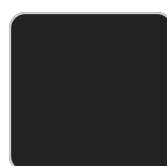
white



british gray



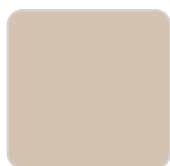
traffic gray



black



ecru



crema



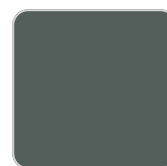
castoro fiber



cacao



notte blue



modo green



pickle



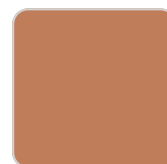
almond



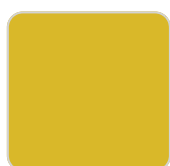
red



purjai red



melon



mostaza

Lacquered aluminium profile.

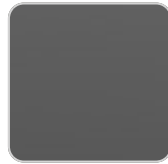
tabletops

HPL
Ref. VVAR02553

VONDOM



white(black edge)



black(black edge)

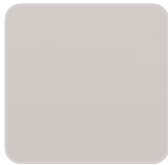


ecru(black edge)

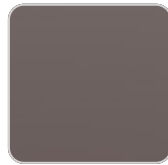
HPL black edge

Solid Core

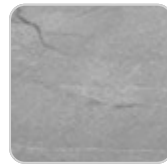
Ref. VVAR02554



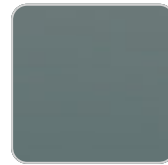
piombo gray



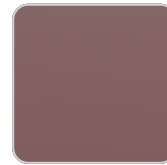
cacao



yule gray



modo green



purjai red



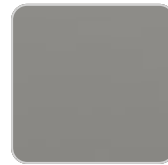
gioia bianco



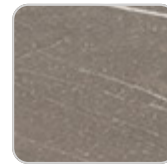
yule brown



notte blue



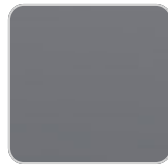
british gray



pulpis gray



white (white edge)



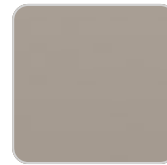
traffic gray



kandia black



crema



castoro fiber

Solid Core wood

Ref. VVAR02554



oak1

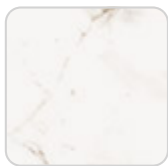


oak2

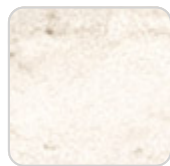
VONDOM

Dekton

Ref. VVAR02829



entzo



danae



kelya

Ambients

