

Frame aluminium table 70x70x74

by Ramón Esteve

Frame, outdoor collection by Ramon Esteve, comes from generating serene and timeless shapes using the framework as elementary geometry. The endless possibilities offered by the material using advanced technology, was the motivation to explore the limits.

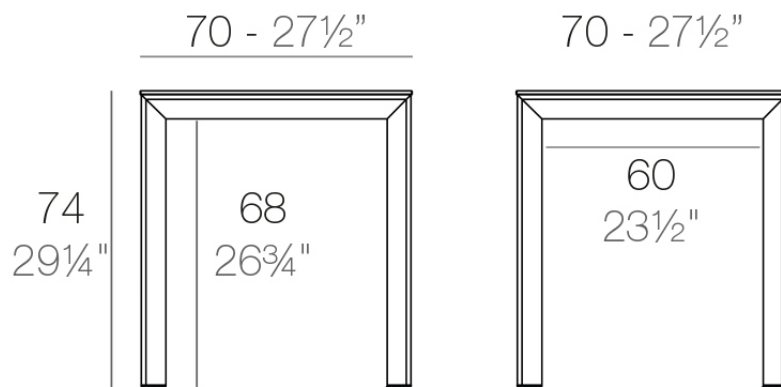


Info

Description

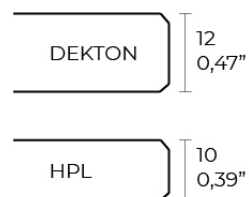
Extruded aluminum with cast lacquered aluminum base. HPL Table top ó Dekton Table top. Item suitable for indoor and outdoor use. HPL Table top.

Weight: 14.23 Kg



FRAME Mesa 70x70cm

FRAME Dining Table 27½"x27½"



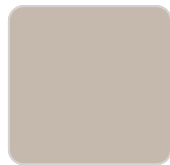
Finishes

finishes

ALUMINIUM
Ref. 54231FB



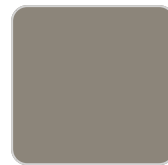
white



ecru



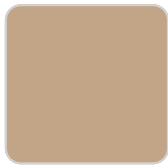
smoked



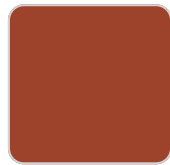
tortora



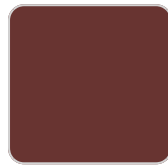
cream



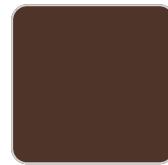
camel



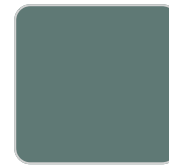
clay



garnet



brown



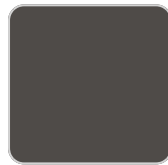
green



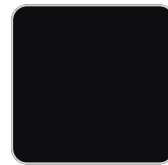
blue



gray



anthracite



black

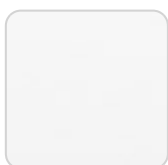


ocean

Lacquered aluminium profile.

tabletops

HPL
Ref. VVAR02548



VONDOM

white(black edge)

ecru(black edge)

black(black edge)

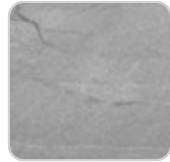
HPL black edge

Solid Core

Ref. VVAR02549



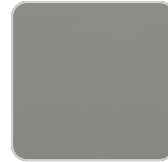
black stone



gray stone



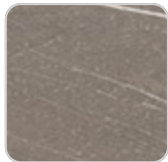
white stone



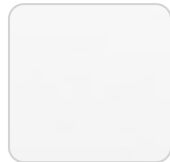
smoked



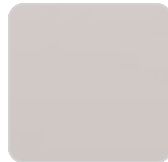
ecru stone



tortora stone



white (white edge)



ecru



tortora



cream



garnet



brown



green



blue



anthracite

Solid Core wood

Ref. VVAR02549



oak1



oak2

Ambients

