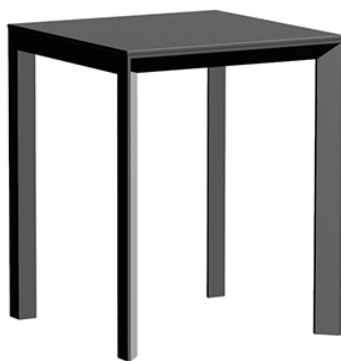


Frame aluminium table 60x60x74

by Ramón Esteve

Frame, outdoor collection by Ramon Esteve, comes from generating serene and timeless shapes using the framework as elementary geometry. The endless possibilities offered by the material using advanced technology, was the motivation to explore the limits.



Info

Description

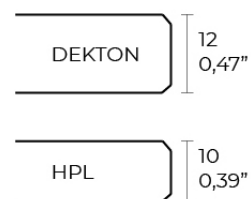
Extruded aluminum with cast lacquered aluminum base. HPL Table top ó Dekton Table top. Item suitable for indoor and outdoor use. HPL Table top.

Weight: 11.88 Kg



FRAME Mesa 60x60cm

FRAME Dinning Table 23½"x23½"



Finishes

finishes

ALUMINIUM
Ref. 54230FB



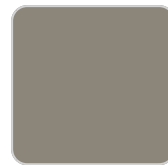
white



smoked



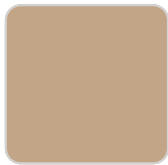
ecru



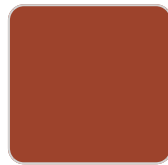
tortora



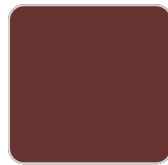
cream



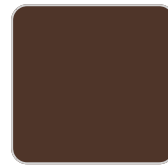
camel



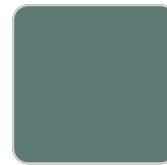
clay



garnet



brown



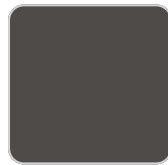
green



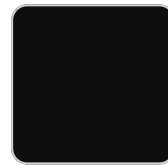
blue



gray



anthracite



black

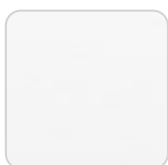


ocean

Lacquered aluminium profile.

tabletops

HPL
Ref. VVAR02536



VONDOM

white(black edge)

ecru(black edge)

black(black edge)

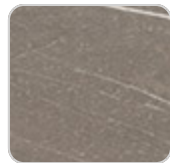
HPL black edge

Solid Core

Ref. VVAR02537



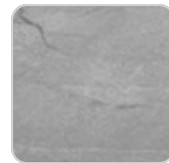
ecru stone



tortora stone



black stone



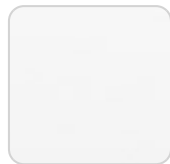
gray stone



white stone



smoked



white (white edge)



ecru



tortora



cream



garnet



brown



green



blue



anthracite

Ambients

