

Quartz dining table 69x69

by Ramón Esteve

The Quartz chairs and table collection, designed by Ramón Esteve for Vondom, is characterized by its **orthogonal geometry and triangular shaped profiles**. Due to the line of one of its vertexes this piece appears extremely light.

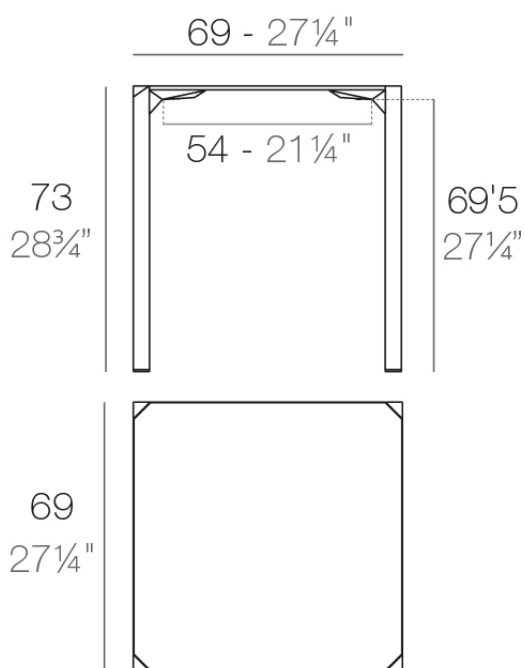


Info

Description

Made from polypropylene and reinforced with fiberglass manufactured by gas injection. Available in various colors. Suitable for indoor and outdoor use.

Weight: 8.51 Kg



QUARTZ Mesa 69 x 69
QUARTZ Table 27 1/4" x 27 1/4"

Finishes

finishes

BASIC PP
Ref. 54204



white



black



ecru

Available in various colors

tabletops

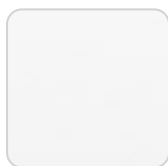
Solid Core
Ref. VVAR02392



notte blue



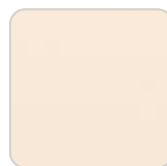
british gray



white (white edge)



traffic gray



crema



yule brown



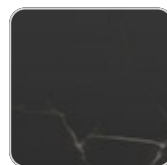
castoro fiber



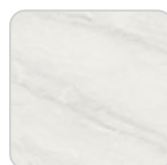
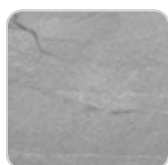
pulpis gray



piombo gray



kandia black



cacao

modo green

yule gray

purjai red

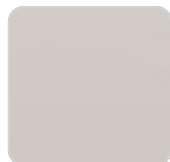
gioia bianco

HPL

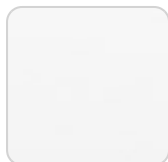
Ref. VVAR02392



black(black edge)



ecru(black edge)

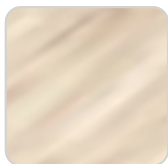


white(black edge)

HPL black edge

Solid Core wood

Ref. VVAR02392



oak1



oak2

