

Quartz dining table ø90

by Ramón Esteve

Created by Ramón Esteve for Vondom, it offers a perfect blend of elegance and functionality in outdoor furniture. With an orthogonal geometry and triangular profiles, this collection stands out for its visual lightness and timeless design.

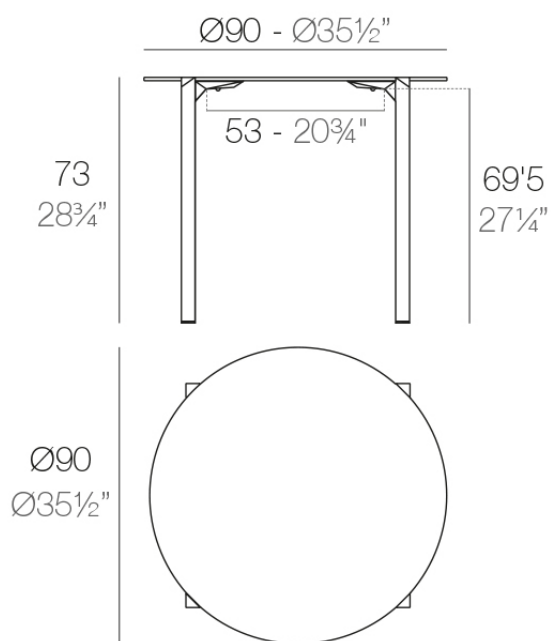


Info

Description

Made from polypropylene and reinforced with fiberglass manufactured by gas injection. Available in various colors. Suitable for indoor and outdoor use.

Weight: 10.8 Kg



QUARTZ Mesa Ø90
QUARTZ Table Ø35 1/2"

Finishes

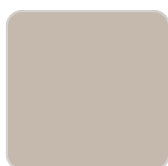
finishes

BASIC PP

Ref. 54201



white



ecru



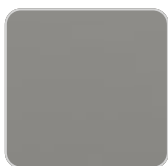
black

Available in various colors

tabletops

Solid Core

Ref. VVAR02351



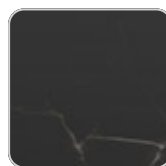
smoked



ecru stone



tortora stone



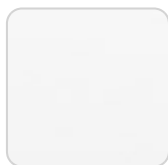
black stone



gray stone



white stone



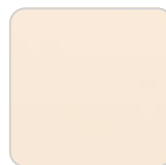
white (white edge)



ecru



tortora



cream



garnet

brown

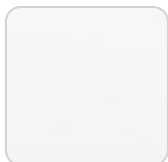
green

blue

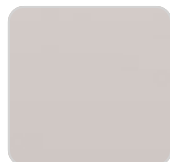
anthracite

HPL

Ref. VVAR02351



white(black edge)



ecru(black edge)

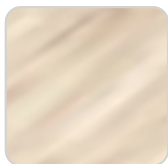


black(black edge)

HPL black edge

Solid Core wood

Ref. VVAR02351



oak1



oak2

