

## Quartz dining table ø79

by Ramón Esteve

The Quartz chairs and table collection, designed by Ramón Esteve for Vondom, is characterized by its **orthogonal geometry and triangular shaped profiles**. Due to the line of one of its vertexes this piece appears extremely light.



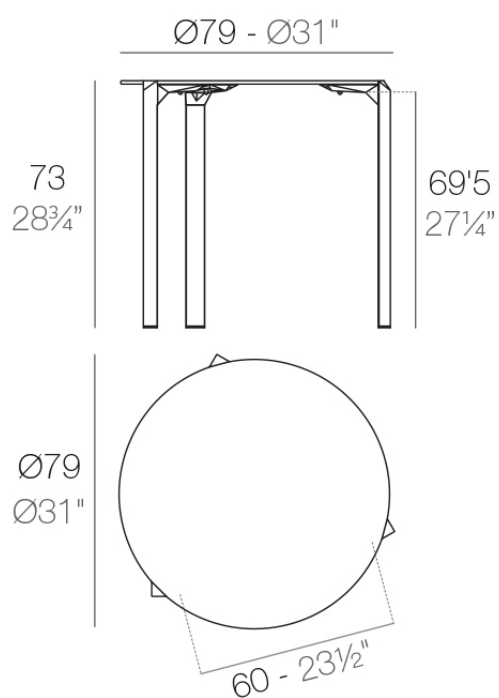
## Info

---

### Description

Made from polypropylene and reinforced with fiberglass manufactured by gas injection. Available in various colors. Suitable for indoor and outdoor use.

Weight: 8.31 Kg



QUARTZ Mesa  $\text{Ø}79$   
QUARTZ Table  $\text{Ø}31''$

## Finishes

---

### finishes

---

BASIC PP  
Ref. 54200



white



black



ecru

Available in various colors

### tabletops

---

Solid Core  
Ref. VVAR02350



crema



castoro fiber



yule brown



piombo gray



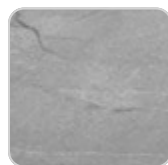
pulpis gray



kandia black



cacao



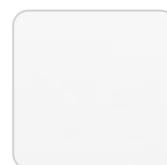
yule gray



modo green



gioia bianco



# VONDOM

purjai red

british gray

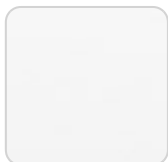
notte blue

traffic gray

white (white edge)

HPL

Ref. VVAR02350



white(black edge)



black(black edge)



ecru(black edge)

HPL black edge

