

Quartz dining table ø69

by Ramón Esteve

The Quartz chairs and table collection, designed by Ramón Esteve for Vondom, is characterized by its **orthogonal geometry and triangular shaped profiles**. Due to the line of one of its vertexes this piece appears extremely light.

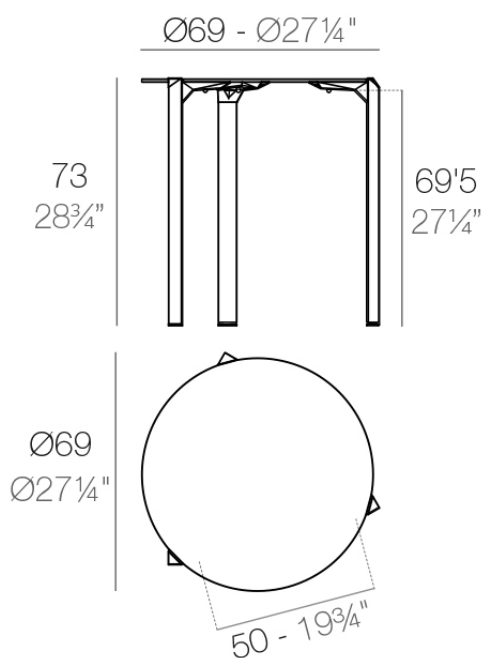


Info

Description

Made from polypropylene and reinforced with fiberglass manufactured by gas injection. Available in various colors. Suitable for indoor and outdoor use.

Weight: 6.53 Kg



QUARTZ Mesa Ø69
QUARTZ Table Ø27 1/4"

Finishes

finishes

BASIC PP
Ref. 54199



white



black



ecru

Available in various colors

tabletops

Solid Core
Ref. VVAR02349



yule brown



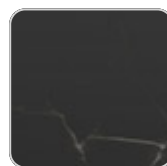
castoro fiber



pulpis gray



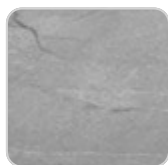
piombo gray



kandia black



cacao



yule gray



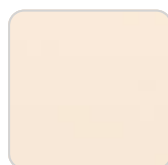
modo green



gioia bianco



purjai red



british gray

notte blue

traffic gray

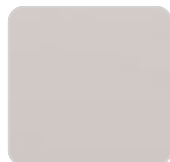
crema

HPL

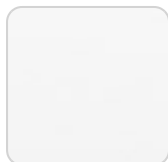
Ref. VVAR02349



black(black edge)



ecru(black edge)



white(black edge)

HPL black edge

