

## Quartz dining table ø59

by Ramón Esteve

The Quartz chairs and table collection, designed by Ramón Esteve for Vondom, is characterized by its **orthogonal geometry and triangular shaped profiles**. Due to the line of one of its vertexes this piece appears extremely light.



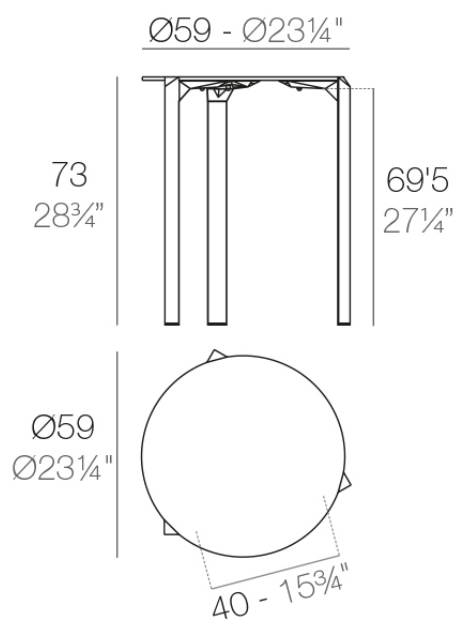
## Info

---

### Description

Made from polypropylene and reinforced with fiberglass manufactured by gas injection. Available in various colors. Suitable for indoor and outdoor use.

Weight: 5.1 Kg



QUARTZ Mesa Ø59  
QUARTZ Table Ø23 1/4"

## Finishes

---

### finishes

---

BASIC PP  
Ref. 54198



white



black



ecru

Available in various colors

### tabletops

---

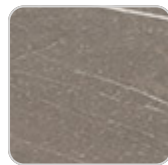
Solid Core  
Ref. VVAR02348



yule brown



castoro fiber



pulpis gray



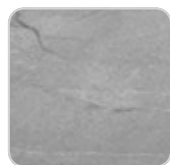
piombo gray



kandia black



cacao



yule gray



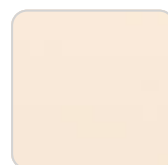
modo green



gioia bianco



purjai red



# VONDOM

british gray

notte blue

traffic gray

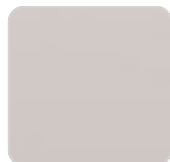
crema

HPL

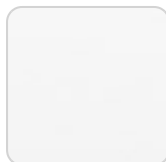
Ref. VVAR02348



black(black edge)



ecru(black edge)



white(black edge)

HPL black edge

## Ambients

---

