

## Quartz chair with arms

by Ramón Esteve

The Quartz chairs and table collection, designed by Ramón Esteve for Vondom, is characterized by its **orthogonal geometry and triangular shaped profiles**. Due to the line of one of its vertexes this piece appears extremely light.



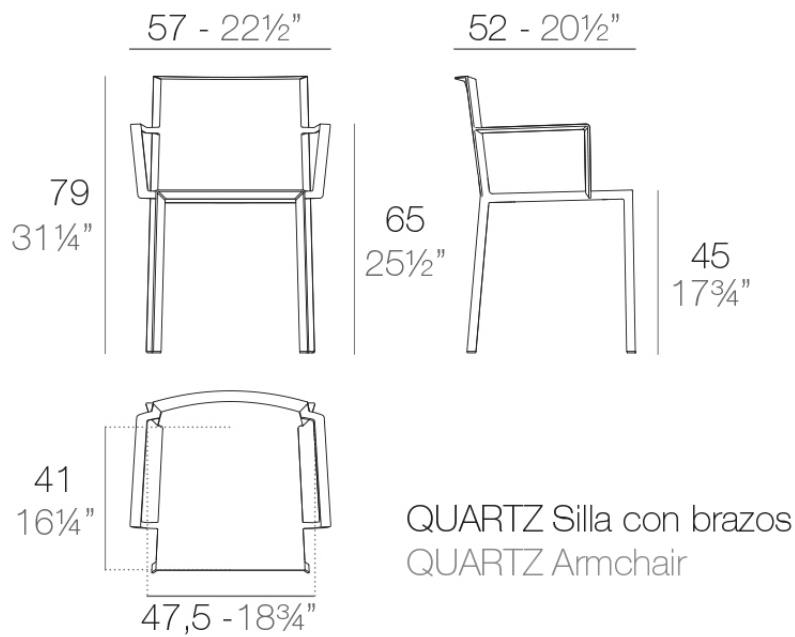
## Info

---

### Description

Injected polypropylene with fiber glass. Stackable. Item suitable for indoor and outdoor use.

Weight: 3 Kg



## Accessories

---

- **Fabric**

Fabric

## Finishes

---

### finishes

---

BASIC PP  
Ref. 54195



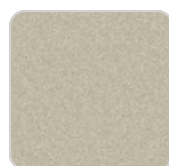
white



black



bronze



ecru



tortora

Available in various colors

LACQUERED COLOR INJECTION PP  
Ref. 54195F



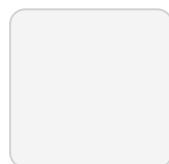
red 3114



anthracite 3106



black 3102



white 3101

—

## Ambients

---

