

## Faz double base 4 leg

by Ramón Esteve

Vondom's Faz collection, designed by Ramón Esteve, is one of the firm's most iconic collections. It stands out for its modular design and sophistication, representing harmony, serenity and timelessness through mineral and emphatic shapes. Faz transforms environments with its unique combination of material and light, creating an enveloping and exclusive atmosphere.



## Info

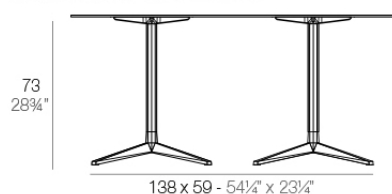
---

### Description

Extruded aluminum tube with cast aluminum base coated with epoxy baked painting. Item suitable for indoor and outdoor use. Table top not included.

Weight: 11.88 Kg

DOUBLE BASE - BASE DOBLE



fixed top / fijo ref. 54167

FAZ BASE BASE 138x59 H73  
FAZ DOUBLE BASE 54¼"x23¼" H28¾"

TABLE TOPS OPTIONS - OPCIONES SOBRES



## Finishes

---

### finishes

---

#### ALUMINIUM BASE

Ref. 54167



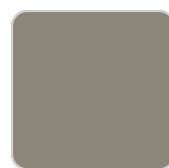
white



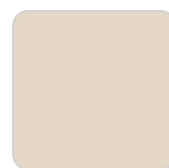
smoked



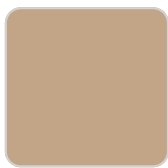
ecru



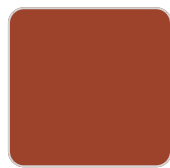
tortora



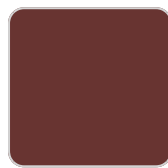
cream



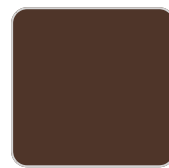
camel



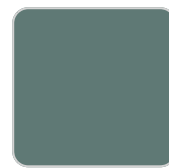
clay



garnet



brown



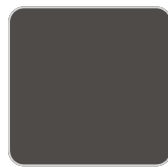
green



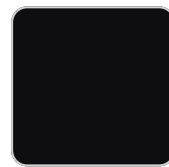
blue



gray



anthracite



black



ocean

Powder coated aluminum base with non collapsable attachment made of polyamide and fiber glass

## Ambients

---

