

Faz 3-legged double table base

by Ramón Esteve

Vondom's Faz collection, designed by Ramón Esteve, is one of the firm's most iconic collections. It stands out for its modular design and sophistication, representing harmony, serenity and timelessness through mineral and emphatic shapes. Faz transforms environments with its unique combination of material and light, creating an enveloping and exclusive atmosphere.



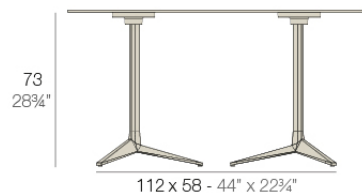
Info

Description

Extruded aluminum tube with cast aluminum base coated with epoxy baked painting. Item suitable for indoor and outdoor use. Table top not included.

Weight: 8.39 Kg

DOUBLE BASE - BASE DOBLE



fixed top / fijo *ref. 54166*
collapsible top / abatible *ref. 54166T*

FAZ BASE DOBLE 112x58 H73
FAZ DOUBLE BASE 44x22 3/4" H28 3/4"

TABLE TOPS OPTIONS - OPCIONES SOBRES



119 x 69 cm
46 3/4" x 27 1/4"

Finishes

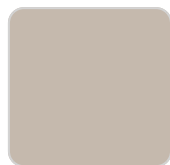
finishes

ALUMINIUM BASE

Ref. 54166T



white



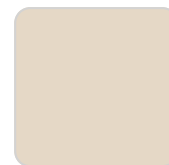
ecru



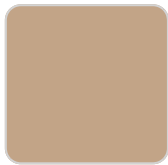
smoked



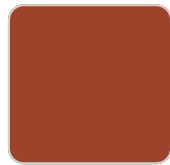
tortora



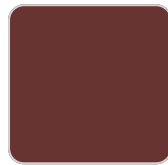
cream



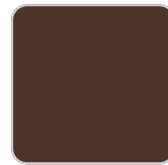
camel



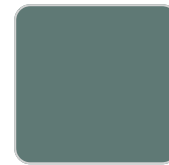
clay



garnet



brown



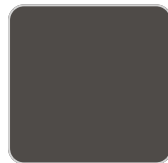
green



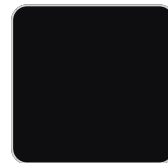
blue



gray



anthracite



black



ocean

Powder coated aluminum base with 90° collapsable attachment made of polyamide and fiber glass

Ambients

