

Faz 4-legged table base ø96,5x50h

by Ramón Esteve

Vondom's Faz collection, designed by Ramón Esteve, is one of the firm's most iconic collections. It stands out for its modular design and sophistication, representing harmony, serenity and timelessness through mineral and emphatic shapes. Faz transforms environments with its unique combination of material and light, creating an enveloping and exclusive atmosphere.



Info

Description

Extruded aluminum tube with cast aluminum base coated with epoxy baked painting. Item suitable for indoor and outdoor use. Table top not included.

Weight: 6.32 Kg

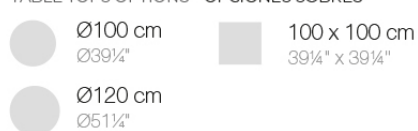
BASE 4 LEGS - BASE 4 PATAS



fixed top / fijo ref. 54143
fixed for glass / fijo para vidrio ref. 54143V

FAZ BASE MESA Ø965 H50
FAZ TABLE BASE Ø38" H19 3/4"

TABLE TOPS OPTIONS - OPCIONES SOBRES



Finishes

finishes

ALUMINIUM BASE

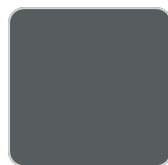
Ref. 54143V



white



british gray



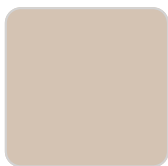
traffic gray



black



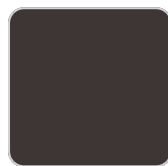
ecru



crema



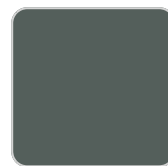
castoro fiber



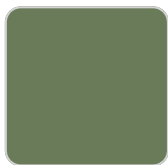
cacao



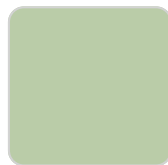
notte blue



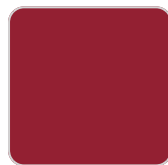
modo green



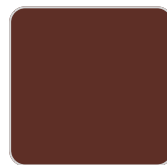
pickle



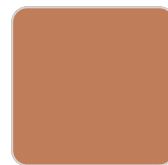
almond



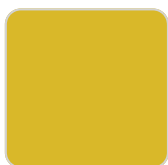
red



purjai red



melon



mostaza

Powder coated aluminum base with non collapsable aluminum attachment powder coated, made exclusively for our glass tops.

Ambients

