

Faz table base ø80x73h

by Ramón Esteve

Vondom's Faz collection, designed by Ramón Esteve, is one of the firm's most iconic collections. It stands out for its modular design and sophistication, representing harmony, serenity and timelessness through mineral and emphatic shapes. Faz transforms environments with its unique combination of material and light, creating an enveloping and exclusive atmosphere.

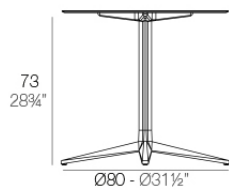


Info

Description

Weight: 5.87 Kg

BASE 4 LEGS - BASE 4 PATAS

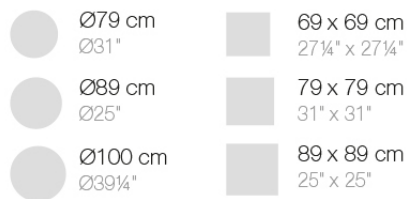


fixed top / fijo ref. 54141

fixed for glass / fijo para vidrio ref. 54141V

FAZ BASE MESA Ø80 H73
FAZ TABLE BASE Ø31¹/₂" H28³/₄"

TABLE TOPS OPTIONS - OPCIONES SOBRES



Finishes

finishes

ALUMINIUM BASE

Ref. 54141V



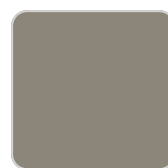
white



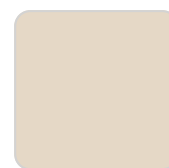
ecru



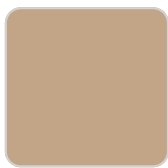
smoked



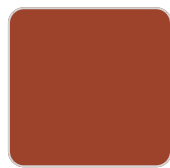
tortora



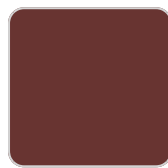
cream



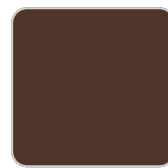
camel



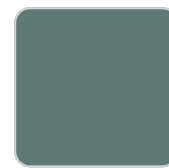
clay



garnet



brown



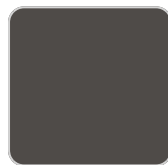
green



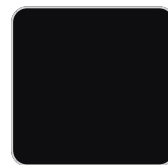
blue



gray



anthracite



black



ocean

Powder coated aluminum base with non collapsable aluminum attachment powder coated, made exclusively for our glass tops.

Ambients

