

## Faz table base ø80x50h

by Ramón Esteve

Vondom's Faz collection, designed by Ramón Esteve, is one of the firm's most iconic collections. It stands out for its modular design and sophistication, representing harmony, serenity and timelessness through mineral and emphatic shapes. Faz transforms environments with its unique combination of material and light, creating an enveloping and exclusive atmosphere.



## Info

---

### Description

Weight: 5.31 Kg

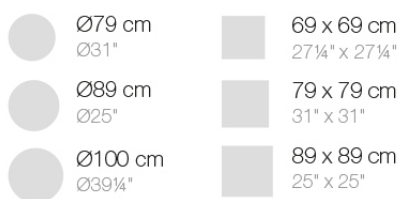
#### BASE 4 LEGS - BASE 4 PATAS



fixed top / fijo ref. 54140  
fixed for glass / fijo para vidrio ref. 54140V

FAZ BASE MESA Ø80 H50  
FAZ TABLE BASE Ø31½" H19¾"

#### TABLE TOPS OPTIONS - OPCIONES SOBRES



## Finishes

---

### finishes

---

#### ALUMINIUM BASE

Ref. 54140V



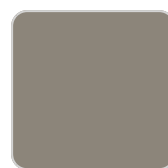
white



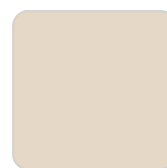
smoked



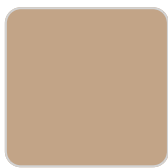
ecru



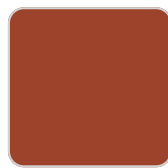
tortora



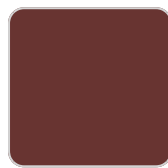
cream



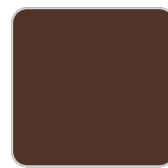
camel



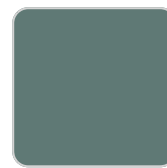
clay



garnet



brown



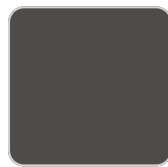
green



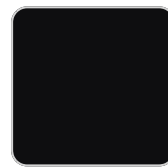
blue



gray



anthracite



black



ocean

Powder coated aluminum base with non collapsable aluminum attachment powder coated, made exclusively for our glass tops.

## Ambients

---

