

## Faz table base h:73cm

by Ramón Esteve

Vondom's Faz collection, designed by Ramón Esteve, is one of the firm's most iconic collections. It stands out for its modular design and sophistication, representing harmony, serenity and timelessness through mineral and emphatic shapes. Faz transforms environments with its unique combination of material and light, creating an enveloping and exclusive atmosphere.



## Info

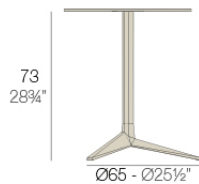
---

### Description

Extruded aluminum tube with cast aluminum base coated with epoxy baked painting. Item suitable for indoor and outdoor use. Table top not included.

Weight: 4.17 Kg

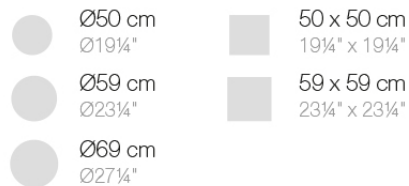
#### BASE 3 LEGS - BASE 3 PATAS



fixed top / fijo ref. 54126  
collapsible top / abatible ref. 54126T  
fixed for glass / fijo para vidrio ref. 54126V

FAZ BASE MESA Ø65 H73  
FAZ TABLE BASE Ø25<sup>1</sup>/<sub>2</sub>" H28<sup>3</sup>/<sub>4</sub>"

#### TABLE TOPS OPTIONS - OPCIONES SOBRES



## Finishes

---

### finishes

---

#### ALUMINIUM BASE

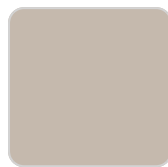
Ref. 54126V



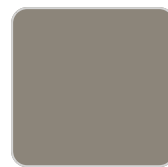
white



smoked



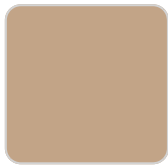
ecru



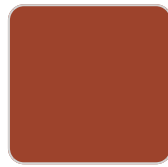
tortora



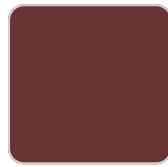
cream



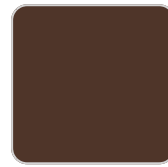
camel



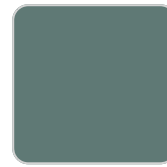
clay



garnet



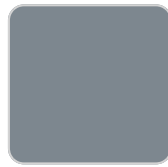
brown



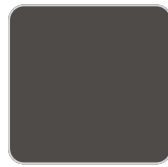
green



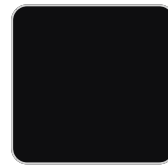
blue



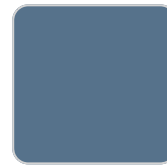
gray



anthracite



black



ocean

Powder coated aluminum base with non collapsable aluminum attachment powder coated, made exclusively for our glass tops.

## Ambients

---

