

Faz table base h:50cm

by Ramón Esteve

Vondom's Faz collection, designed by Ramón Esteve, is one of the firm's most iconic collections. It stands out for its modular design and sophistication, representing harmony, serenity and timelessness through mineral and emphatic shapes. Faz transforms environments with its unique combination of material and light, creating an enveloping and exclusive atmosphere.



Info

Description

Extruded aluminum tube with cast aluminum base coated with epoxy baked painting. Item suitable for indoor and outdoor use. Table top not included.

Weight: 3.99 Kg

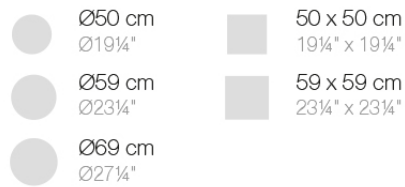
BASE 3 LEGS - BASE 3 PATAS



fixed top / fijo ref. 54125
collapsible top / abatible ref. 54125T
fixed for glass / fijo para vidrio ref. 54125V

FAZ BASE MESA Ø65 H50
FAZ TABLE BASE Ø25 1/2" H19 3/4"

TABLE TOPS OPTIONS - OPCIONES SOBRES



Finishes

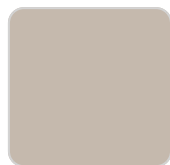
finishes

ALUMINIUM BASE

Ref. 54125V



white



ecru



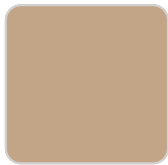
smoked



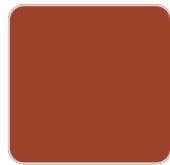
tortora



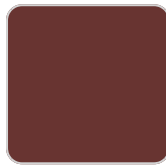
cream



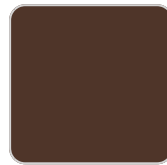
camel



clay



garnet



brown



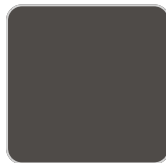
green



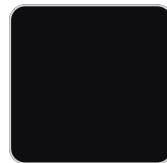
blue



gray



anthracite



black



ocean

Powder coated aluminum base with non collapsable aluminum attachment powder coated, made exclusively for our glass tops.

Ambients

