

Faz table stainless base 80x80

by Ramón Esteve

Vondom's Faz collection, designed by Ramón Esteve, is one of the firm's most iconic collections. It stands out for its modular design and sophistication, representing harmony, serenity and timelessness through mineral and emphatic shapes. Faz transforms environments with its unique combination of material and light, creating an enveloping and exclusive atmosphere.

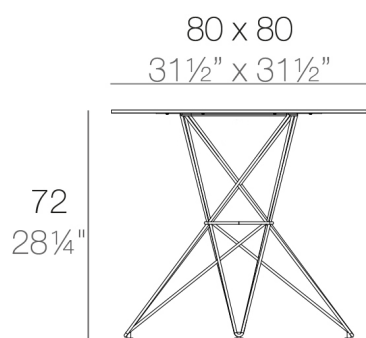


Info

Description

Made of polyethylene resin by rotational moulding. 100% Recyclable. Item suitable for indoor and outdoor use. Available in different finishes.

Weight: 11.2 Kg



FAZ Mesa Inox 80x80
FAZ Dinning Table
Stainless Base 31 1/2" x 27 1/2"

Finishes

finishes

BASIC

Ref. 54106CB



orange



white



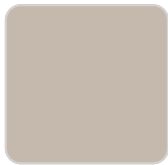
white 201



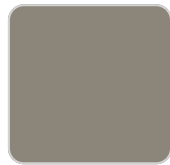
smoked



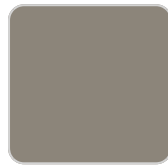
ecru



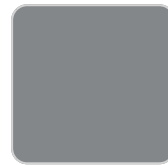
ecru 2003



tortora



tortora 2004



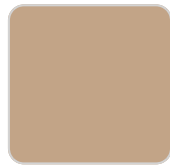
gray 2005



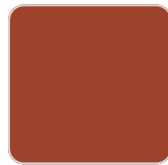
cream 2017



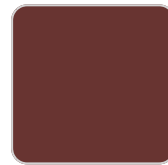
cream



camel 2020



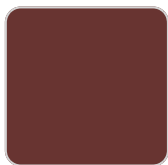
clay 2022



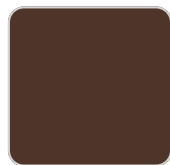
garnet



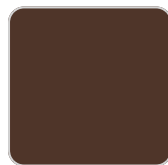
red



garnet 2015



brown



brown 2008



green



green 2016



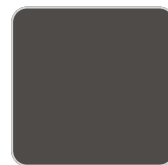
blue



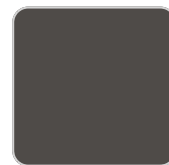
blue 2018



gray

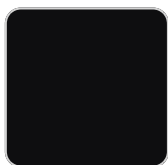


anthracite 2006



anthracite

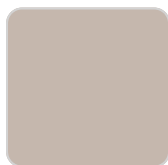
VONDOM



black 2002



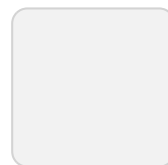
black



ecru granite



cream granite



ice 2101



khaki



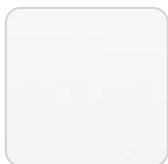
beige

Matt Polyethylene

tabletops

HPL

Ref. VVAR00522



white(black edge)



ecru(black edge)



black(black edge)

HPL black edge

