

Faz table stainless base 100x100x72

by Ramón Esteve

Vondom's Faz collection, designed by Ramón Esteve, is one of the firm's most iconic collections. It stands out for its modular design and sophistication, representing harmony, serenity and timelessness through mineral and emphatic shapes. Faz transforms environments with its unique combination of material and light, creating an enveloping and exclusive atmosphere.

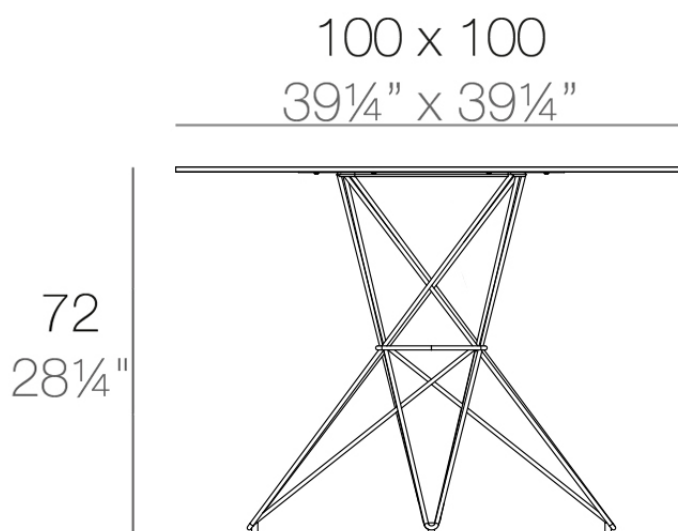


Info

Description

Made of polyethylene resin by rotational moulding. 100% Recyclable. Item suitable for indoor and outdoor use. Available in different finishes.

Weight: 18.1 Kg



FAZ Mesa Inox 100x100
FAZ Dining Table Stainless
Base 39 1/4" x 39 1/4"

Finishes

finishes

BASIC

Ref. 54060CB



white



british gray



traffic gray



black



ecru



crema



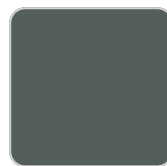
castoro fiber



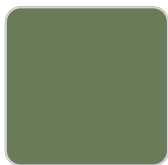
cacao



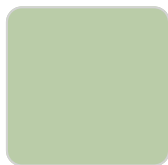
notte blue



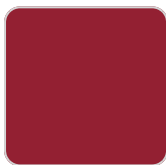
modo green



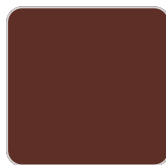
pickle



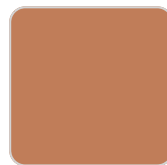
almond



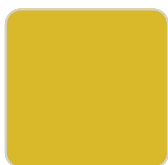
red



purjai red



melon



mostaza

Matt Polyethylene

tabletops

Solid Core

Ref. VVAR00555

VONDOM



kandia black



crema



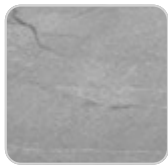
castoro fiber



piombo gray



cacao



yule gray



modo green



purjai red



gioia bianco



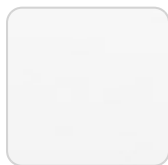
notte blue



yule brown



british gray



white (white edge)



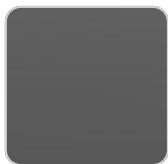
pulpis gray



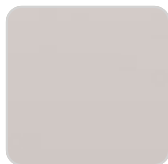
traffic gray

HPL

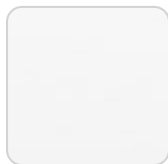
Ref. VVAR00555



black(black edge)



ecru(black edge)



white(black edge)

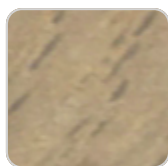
HPL black edge

Solid Core wood

Ref. VVAR00555



oak1



oak2

