

Faz table stainless base 70x70x72

by Ramón Esteve

Vondom's Faz collection, designed by Ramón Esteve, is one of the firm's most iconic collections. It stands out for its modular design and sophistication, representing harmony, serenity and timelessness through mineral and emphatic shapes. Faz transforms environments with its unique combination of material and light, creating an enveloping and exclusive atmosphere.

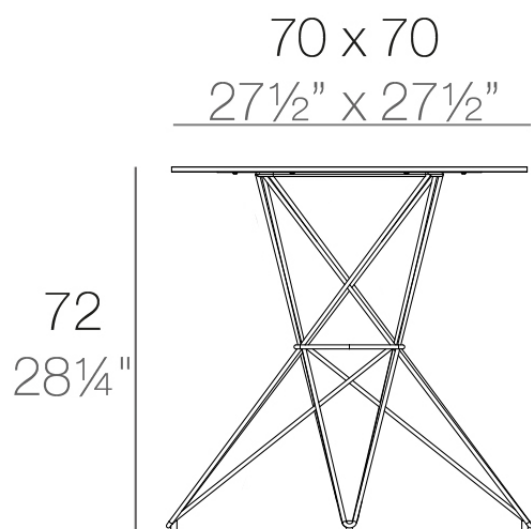


Info

Description

Made of polyethylene resin by rotational moulding. 100% Recyclable. Item suitable for indoor and outdoor use. Available in different finishes.

Weight: 9.5 Kg



FAZ Mesa Inox 70x70
FAZ Dining Table Stainless
Base 27 1/2" x 27 1/2"

Finishes

finishes

BASIC

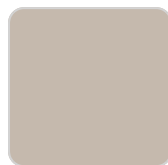
Ref. 54058CB



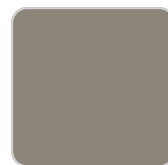
white



smoked



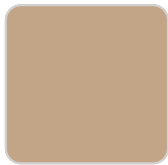
ecru



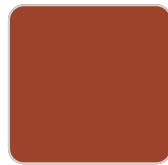
tortora



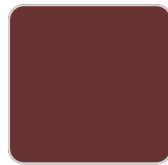
cream



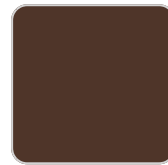
camel 2020



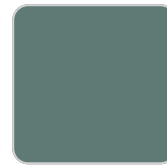
clay 2022



garnet



brown



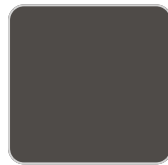
green



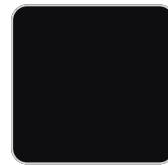
blue



gray



anthracite



black



ecru granite



cream granite

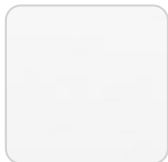
Matt Polyethylene

tabletops

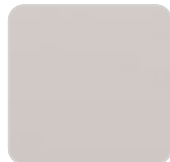
HPL

Ref. VVAR00522

VONDOM



white(black edge)



ecru(black edge)



black(black edge)

HPL black edge

Ambients

