

## Faz table stainless base 90x90x72

by Ramón Esteve

Vondom's Faz collection, designed by Ramón Esteve, is one of the firm's most iconic collections. It stands out for its modular design and sophistication, representing harmony, serenity and timelessness through mineral and emphatic shapes. Faz transforms environments with its unique combination of material and light, creating an enveloping and exclusive atmosphere.



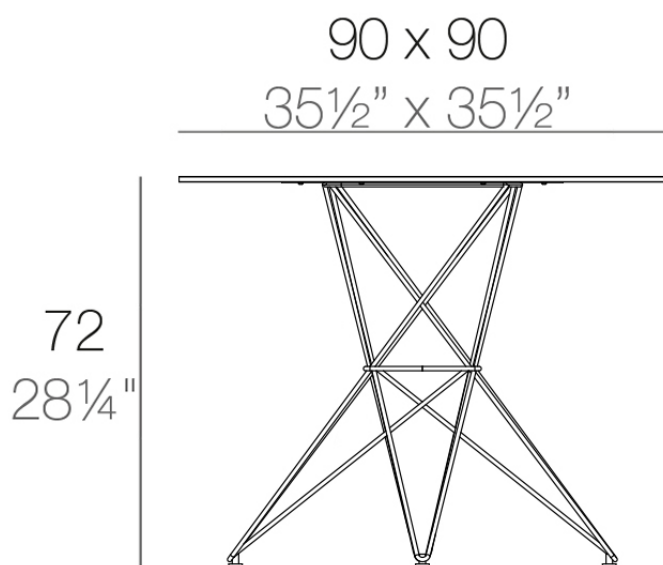
## Info

---

### Description

Made of polyethylene resin by rotational moulding. 100% Recyclable. Item suitable for indoor and outdoor use. Available in different finishes.

Weight: 15 Kg



FAZ Mesa Inox 90x90  
FAZ Dinning Table  
Stainless Base 35½"

## Finishes

---

### finishes

---

BASIC

Ref. 54054CB



white



british gray



traffic gray



black



ecru



crema



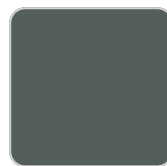
castoro fiber



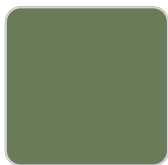
cacao



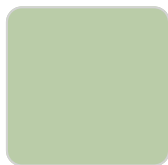
notte blue



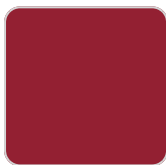
modo green



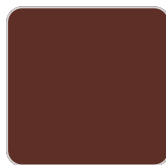
pickle



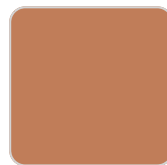
almond



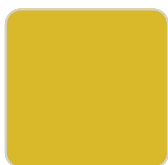
red



purjai red



melon



mostaza

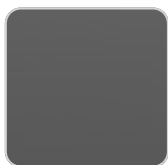
Matt Polyethylene

### tabletops

---

HPL

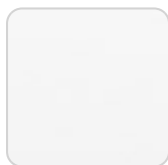
Ref. VVAR00577



black(black edge)



ecru(black edge)



white(black edge)

HPL black edge

## Ambients

---

