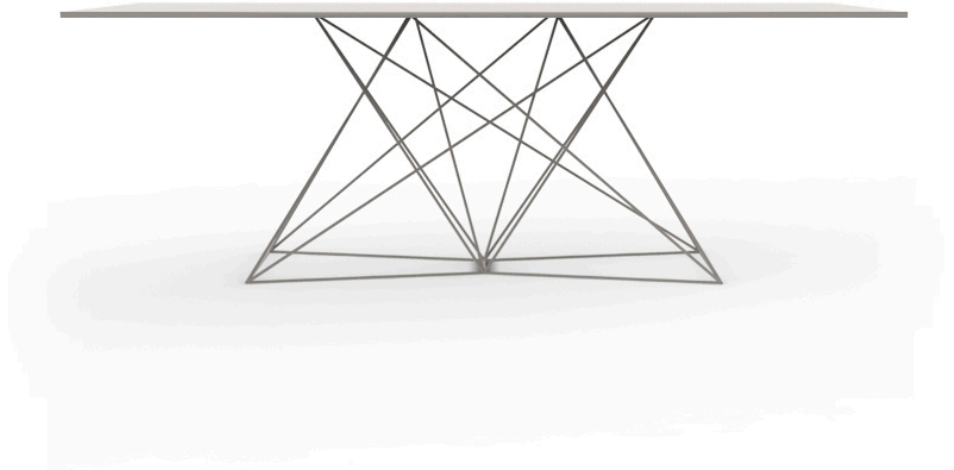


Faz table stainless 200x100x72

by Ramón Esteve

Vondom's Faz collection, designed by Ramón Esteve, is one of the firm's most iconic collections. It stands out for its modular design and sophistication, representing harmony, serenity and timelessness through mineral and emphatic shapes. Faz transforms environments with its unique combination of material and light, creating an enveloping and exclusive atmosphere.

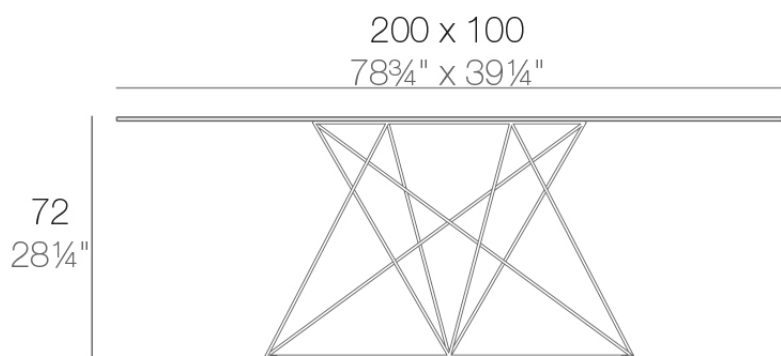


Info

Description

Stainless steel legs with lacquer in a colour to match the tabletop. Tabletop is available in HPL or Full White (white only).

Weight: 49.08 Kg



FAZ Mesa Inox 200 x 100

FAZ Dinning Table Stainless Base 78 3/4"x39 1/4"

Finishes

finishes

BASIC
Ref. 54053B



white



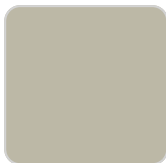
british gray



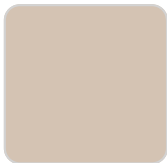
traffic gray



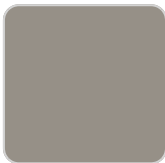
black



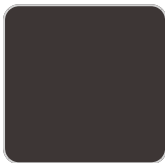
ecru



crema



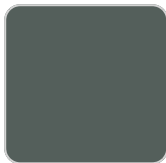
castoro fiber



cacao



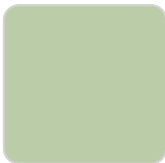
notte blue



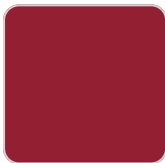
modo green



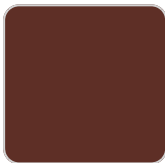
pickle



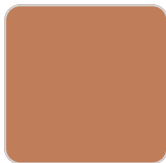
almond



red



purjai red



melon



mostaza

Matt Polyethylene

Ambients

