

Faz table xl 300x120x72

by Ramón Esteve

Vondom's Faz collection, designed by Ramón Esteve, is one of the firm's most iconic collections. It stands out for its modular design and sophistication, representing harmony, serenity and timelessness through mineral and emphatic shapes. Faz transforms environments with its unique combination of material and light, creating an enveloping and exclusive atmosphere.

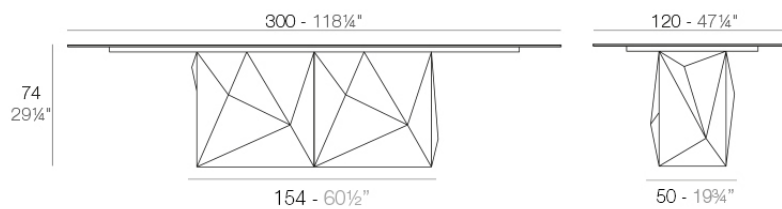


Info

Description

Made of polyethylene resin by rotational moulding. 100% Recyclable. Item suitable for indoor and outdoor use. Available in different finishes.

Weight: 162.1 Kg



FAZ Mesa XL 300x 120
FAZ Dining Table XL 118 1/4" x 47 1/4"

Finishes

finishes

BASIC

Ref. 54017DB



orange



white 201



ecru 2003



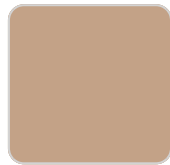
tortora 2004



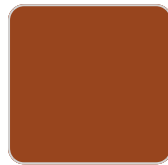
gray 2005



cream 2017



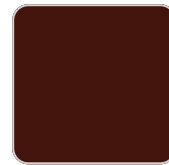
camel 2020



clay 2022



red



garnet 2015



brown 2008



green 2016



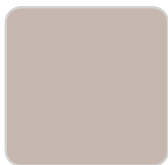
blue 2018



anthracite 2006



black 2002



ecru granite



cream granite



ice 2101



khaki



beige

Matt Polyethylene

LACQUERED

Ref. 54017F

VONDOM



white 3101



ecru 3103



tortora 3104



cream 3117



garnet 3113



brown 3125



green 3116



blue 3118



gray 3105



anthracite 3106



black 3102

Lacquered Polyethylene

lighting

WHITE LED
Ref. 54017W



ice 2101

White internally lit unit with LED technology. Available only in matte ice white finish.

RGBW LED
Ref. 54017L



ice 2101

Unit with internal lighting with RGBW LED technology and remote control unit for switching colors. Available only in matte ice white finish. Remote control included.

RGBW LED DMX

Ref. 54017D



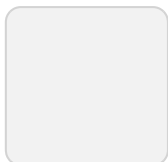
ice 2101

Unit with internal lighting with RGBW LED technology and remote control unit for switching colors. Also controlled by DMX-1024 (wireless), enabling communication between one or more products simultaneously via the DMX transmitter (not included). There are two options to choose from: Professional XLR DMX and Home WIFI DMX. (Remote control included).

Optional battery

RGBW LED BATTERY

Ref. 54017DYB



ice 2101

Unit with internal lighting with battery-powered RGBW LED technology. Includes charger and remote control for switching colors and charger. Available only in matte ice white finish.

RGBW LED DMX BATTERY

Ref. 54017DY



ice 2101

Unit with internal lighting with RGBW LED technology and remote control unit for switching colors. Also controlled by DMX-1024 (wireless), enabling communication between one or more products simultaneously via the DMX transmitter (not included). There are two options to choose from: Professional XLR DMX and Home WIFI DMX. (Remote control included).

tabletops

HPL

Ref. VVAR03381



white(black edge)



ecru(black edge)



black(black edge)

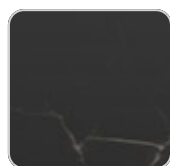
HPL black edge

Solid Core

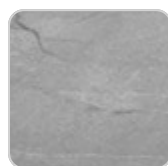
Ref. VVAR03382



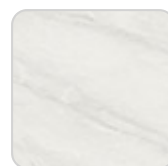
tortora stone



black stone



gray stone



white stone



smoked

VONDOM



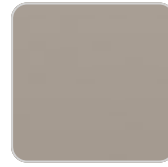
ecru stone



white (white edge)



ecru



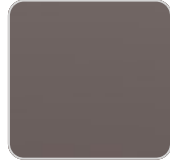
tortora



cream



garnet



brown



green



blue



anthracite

Solid Core wood Ref. VVAR03382



oak1



oak2

