

Pal nano planter ø14x28

by Karim Rashid

Pal is, as the name suggests, a friendly and modern line of **indoor & outdoor furniture design** by Karim Rashid for the Spanish brand Vondom. This collection is a selection of **exclusive, minimalistic and colorful collections** of design furniture.

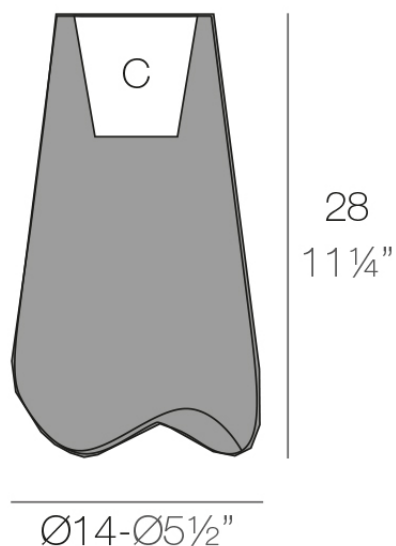


Info

Description

Pot made of polyethylene resin by rotational moulding. 100% Recyclable.
Item suitable for indoor and outdoor use. Available in different finishes.

Weight: 0.5 Kg



PAL Nano Macetero 28
PAL Nano Planter 28

C = 1 L
C = 1/4 gal

Finishes

finishes

BASIC

Ref. 51015A



white 2001



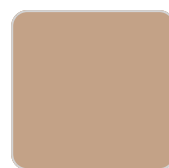
ecru 2003



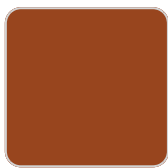
tortora 2004



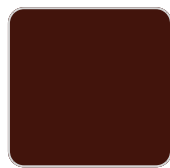
cream 2017



camel 2020



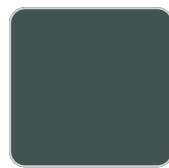
clay 2022



garnet 2015



brown 2008



green 2016



blue 2018



gray 2005



anthracite 2006



black 2002



ecru granite



cream granite



ice 2101

Matt Polyethylene

LACQUERED

Ref. 51015F



white 3101



ecru 3103



tortora 3104



cream 3117



garnet 3113



brown 3125



green 3116



blue 3118



gray 3105



anthracite 3106



black 3102

Lacquered Polyethylene

lighting

WHITE LED
Ref. 51015W



ice 2101

White internally lit unit with LED technology. Available only in matte ice white finish.

Ambients

