

Cushion 50x50

by Ramón Esteve

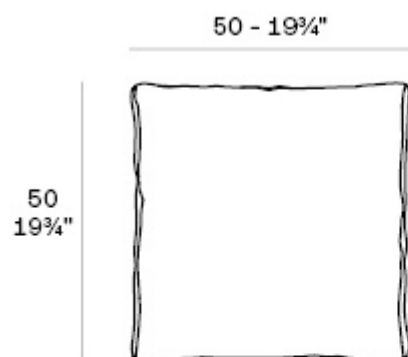
The outdoor sofa Tablet collection, designed by Ramon Esteve for Vondom, links new technologies and flexibility to the versatility of a sectional composition, creating a program based on the duality, identity and integration. Its character blends with the space and adapts itself to it.



Info

Description

Weight: 1.3 Kg



Tablet. Pillow 50x50cm
Tablet. Cojin 50x50cm
50000

Finishes

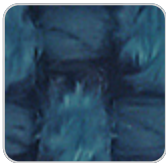
DECORATIVE CUSHIONS

Ref. 50000

fabric

GETARIA

Ref. 50000



green 10053 getaria



aphrodite 10013
getaria



aquamarine 10003
getaria

Premium high density 100% acrylic fabric, available in a wide range of colors.

PORTONOVO

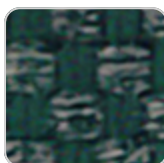
Ref. 50000



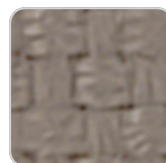
ocean 10161
portonovo



cream 10153
portonovo



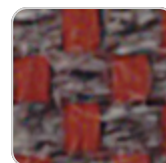
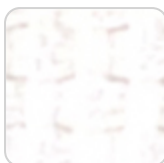
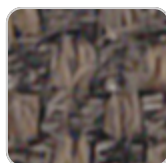
green 10160
portonovo



tortora 10152
portonovo



jade 10159 portonovo

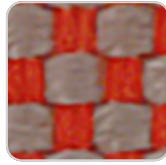


VONDOM

ecru 10151 portonovo



brown 10158 portonovo



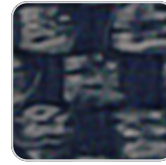
white 10150 portonovo



black 10165 portonovo



garnet 10157 portonovo



anthracite 10164 portonovo



clay 10156 portonovo



gray 10163 portonovo



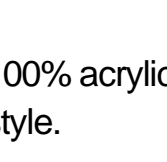
mustard 10155 portonovo



blue 10162 portonovo



camel 10154 portonovo



100% acrylic fabric, with a flat and simple design, which adapts to any decorative style.

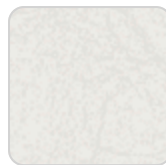
ALTEA Ref. 50000



tortora 1102 altea



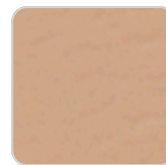
white 1100 altea



ecru 1111 altea



cream 1103 altea



camel 1120 altea



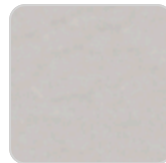
clay 1122 altea



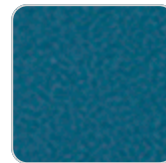
garnet 1106 altea



brown 1104 altea



jade 1125 altea



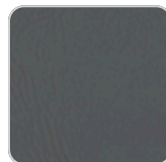
ocean 1123 altea



blue 1114 altea



gray 1101 altea



anthracite 1124 altea



black 1105 altea

Soft outdoor fabric with leather-like texture.

