

Vases table 210x100x73

by JM Ferrero

VASES Collection, is made up of flowerpots, furniture and lighting designed by the Valencian designer JM Ferrero. It's shapes were inspired by diamond cutting, producing pieces of clear-cut shapes and great style, creating a big visual impact.

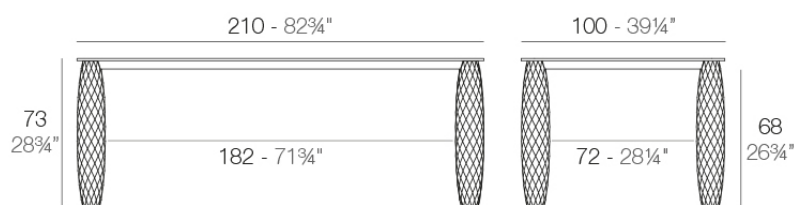


Info

Description

Made of polyethylene resin by rotational moulding. 100% Recyclable. Item suitable for indoor and outdoor use. Available in different finishes.

Weight: 54.31 Kg



VASES Mesa 210x100
VASES Dinning Table 82 3/4"x39 1/4"

Finishes

finishes

LACQUERED

Ref. 47079F



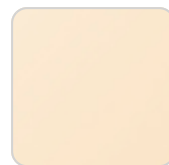
white 3101



ecru 3103



tortora 3104



cream 3117



garnet 3113



brown 3125



green 3116



blue 3118



gray 3105



anthracite 3106



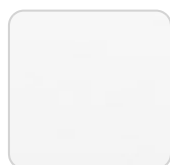
black 3102

Lacquered Polyethylene

tabletops

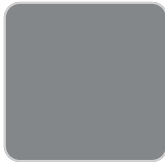
HPL

Ref. 47079



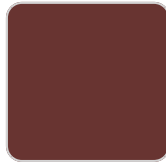
VONDOM

orange



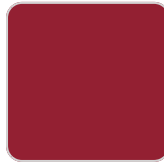
gray 2005

white 201



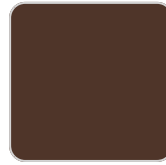
garnet 2015

ecru 2003



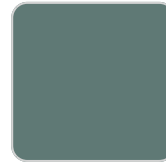
red

tortora 2004



brown 2008

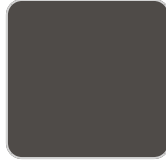
cream 2017



green 2016



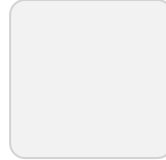
blue 2018



anthracite 2006



black 2002



ice 2101



khaki



beige

HPL black edge

tabletops

Solid Core

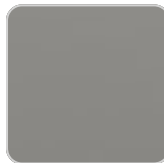
Ref. VVAR00817



white stone



green stone



smoked



black stone



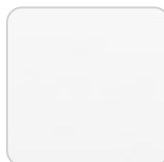
ecru stone



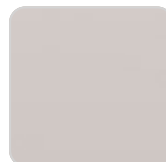
gray stone



tortora stone



white (white edge)



ecru



tortora



VONDOM

cream



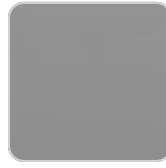
green

camel



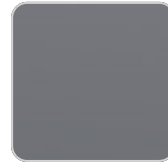
blue

clay



gray

garnet



anthracite

brown



ocean

HPL

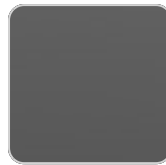
Ref. VVAR00817



white(black edge)



ecru(black edge)



black(black edge)

HPL black edge

Solid Core wood

Ref. VVAR00817



oak1



oak2

Ambients

