

Vases nano planter ø14x12

by JM Ferrero

VASES Collection, is made up of flowerpots, furniture and lighting designed by the Valencian designer JM Ferrero. It's shapes were inspired by diamond cutting, producing pieces of clear-cut shapes and great style, creating a big visual impact.

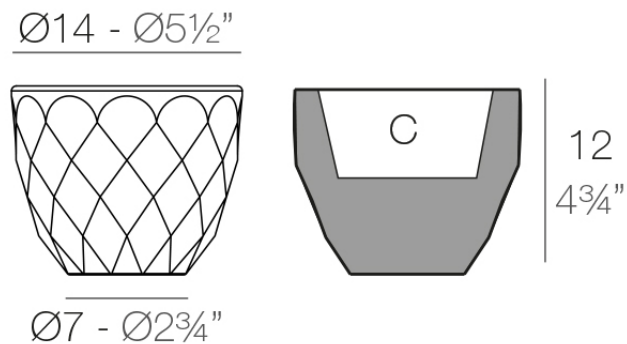


Info

Description

Pot made of polyethylene resin by rotational moulding. 100% Recyclable. Item suitable for indoor and outdoor use. Available in different finishes.

Weight: 0.2 Kg



VASES Nano Ø14 x 12 cm

VASES Nano Ø5½" x 4¾"

C = 0,5 L

C = ¼ gal

Finishes

finishes

BASIC

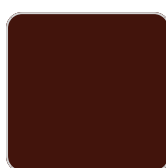
Ref. 47012A



crema



ice



purjai red



orange



notte blue



white



black



bronze



steel



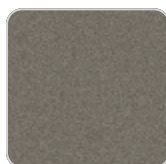
anthracite



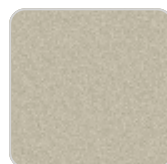
red



khaki



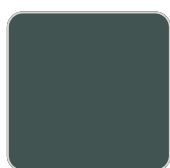
taupe



ecru



beige



green

Matt Polyethylene

LACQUERED

Ref. 47012F

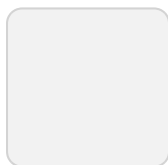
VONDOM



crema



modo green



ice



purjai red



orange



notte blue



white



black



bronze



steel



anthracite



champany



red



khaki



taupe



ecru



beige

Lacquered Polyethylene

lighting

WHITE LED
Ref. 47012W



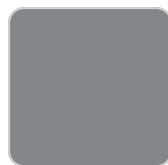
ice



white



black



steel

White internally lit unit with LED technology. Available only in matte ice white finish.

Ambients



VONDOM

