

## Ulm high round pot ø74x90

by Ramón Esteve

Vondom's Ulm collection, designed by Ramón Esteve, is a new basic with a rationalist and universal character. This collection of modular outdoor furniture harmonises ergonomics, design and technology, based on basic volumes of cube, prism and sphere. Ulm transforms any outdoor space with its innovative and sophisticated design.



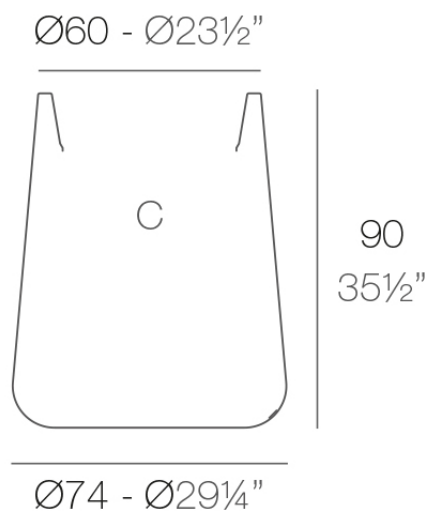
## Info

---

### Description

Pot made of polyethylene resin by rotational moulding. 100% Recyclable. Item suitable for indoor and outdoor use. Available in different finishes.

Weight: 12 Kg



ULM redonda alta  $\text{Ø}74$  cm  
ULM round high  $\text{Ø}29\frac{1}{4}"$

C = 70 L  
C =  $18\frac{1}{2}$  gal

## Finishes

---

### finishes

---

SIMPLE  
Ref. 42216



white 2001



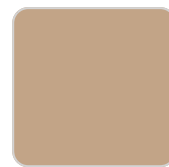
ecru 2003



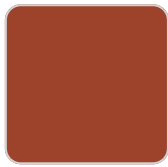
tortora 2004



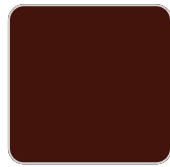
cream 2017



camel 2020



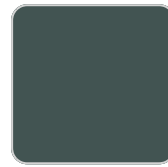
clay 2022



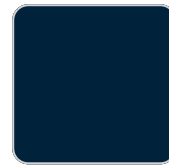
garnet 2015



brown 2008



green 2016



blue 2018



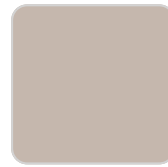
gray 2005



anthracite 2006



black 2002



ecru granite



cream granite



ice 2101

Matt finishes pot one wall

BASIC  
Ref. 42216A

# VONDOM



white 2001



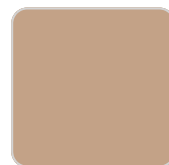
ecru 2003



tortora 2004



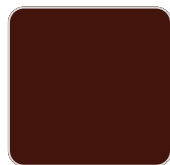
cream 2017



camel 2020



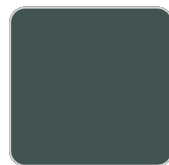
clay 2022



garnet 2015



brown 2008



green 2016



blue 2018



gray 2005



anthracite 2006



black 2002



ecru granite



cream granite



ice 2101

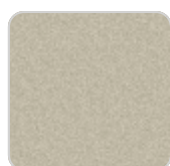
## Matt Polyethylene

## SELF-WATERING

Ref. 42216R



white 2001



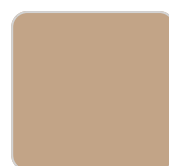
ecru 2003



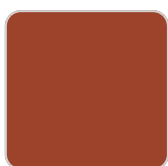
tortora 2004



cream 2017



camel 2020



clay 2022



garnet 2015



brown 2008



green 2016



blue 2018

# VONDOM



gray 2005



anthracite 2006



black 2002



ecru granite



cream granite



ice 2101

Self-watering system included in all planters except those with basic finish

## LACQUERED

Ref. 42216F



white 3101



ecru 3103



tortora 3104



cream 3117



garnet 3113



brown 3125



green 3116



blue 3118



gray 3105



anthracite 3106



black 3102

Lacquered Polyethylene

## lighting

---

WHITE LED

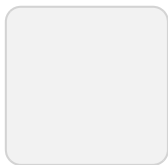
Ref. 42216W



ice 2101

White internally lit unit with LED technology. Available only in matte ice white finish.

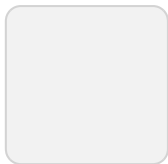
RGBW LED  
Ref. 42216L



ice 2101

Unit with internal lighting with RGBW LED technology and remote control unit for switching colors. Available only in matte ice white finish. Remote control included.

RGBW LED DMX  
Ref. 42216D



ice 2101

Unit with internal lighting with RGBW LED technology and remote control unit for switching colors. Also controlled by DMX-1024 (wireless), enabling communication between one or more products simultaneously via the DMX transmitter (not included). There are two options to choose from: Professional XLR DMX and Home WIFI DMX. (Remote control included).

Optional battery

RGBW LED BATTERY

Ref. 42216Y



ice 2101

Unit with internal lighting with battery-powered RGBW LED technology. Includes charger and remote control for switching colors and charger. Available only in matte ice white finish.

## RGBW LED DMX BATTERY

Ref. 42216DY



ice 2101

Unit with internal lighting with RGBW LED technology and remote control unit for switching colors. Also controlled by DMX-1024 (wireless), enabling communication between one or more products simultaneously via the DMX transmitter (not included). There are two options to choose from: Professional XLR DMX and Home WIFI DMX. (Remote control included).

## Ambients

---

