

Cube 10x10x10

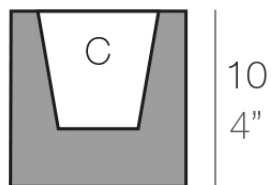


Info

Description

Pot made of polyethylene resin by rotational moulding. 100% Recyclable. Item suitable for indoor and outdoor use. Available in different finishes.

Weight: 0.18 Kg



10x10 - 4"x4"

CUBO Nano 10 x 10 x 10 cm

C = 0,5 L

CUBO Nano 4" x 4" x 4"

C = ¼ gal

Finishes

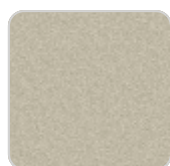
finishes

BASIC

Ref. 41310A



white 2001



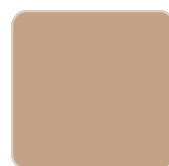
ecru 2003



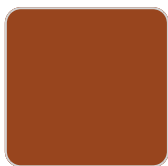
tortora 2004



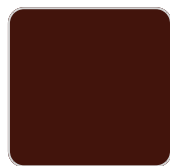
cream 2017



camel 2020



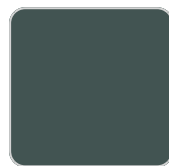
clay 2022



garnet 2015



brown 2008



green 2016



blue 2018



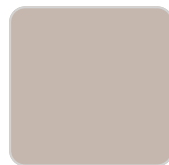
gray 2005



anthracite 2006



black 2002



ecru granite



cream granite



ice 2101

Matt Polyethylene

LACQUERED

Ref. 41310F

VONDOM



white 3101



ecru 3103



tortora 3104



cream 3117



garnet 3113



brown 3125



green 3116



blue 3118



gray 3105



anthracite 3106



black 3102

Lacquered Polyethylene

lighting

WHITE LED
Ref. 41310W



ice 2101

White internally lit unit with LED technology. Available only in matte ice white finish.

Ambients

