

Angular pot

The most extensive collection of indoor and outdoor planters designed by [Studio Vondom](#). Timeless and minimalist designs that allow you to create unique and original atmospheres for homes, restaurants and any space.

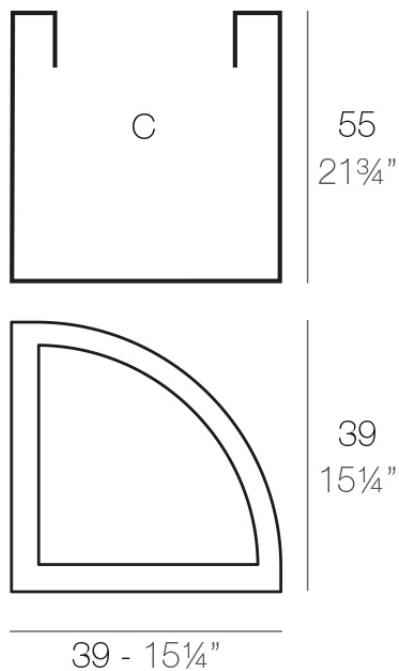


Info

Description

Pot made of polyethylene resin by rotational moulding. 100% Recyclable. Item suitable for indoor and outdoor use. Available in different finishes.

Weight: 1.9 Kg



ANGULAR 39 x 55 cm C = 70 L 5 cm
ANGULAR 15¹/₄" x 21³/₄" C = 18¹/₂ gal

Finishes

finishes

SIMPLE

Ref. 41070



white 2001



ecru 2003



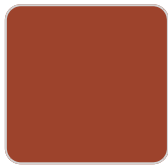
tortora 2004



cream 2017



camel 2020



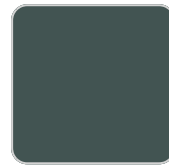
clay 2022



garnet 2015



brown 2008



green 2016



blue 2018



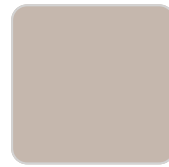
gray 2005



anthracite 2006



black 2002



ecru granite



cream granite



ice 2101

Matt finishes pot one wall

LACQUERED

Ref. 41070F

VONDOM



white 3101



ecru 3103



tortora 3104



cream 3117



garnet 3113



brown 3125



green 3116



blue 3118



gray 3105



anthracite 3106



black 3102

Lacquered Polyethylene

Ambients

