

## Vineyard mesa comedor ruedas

by Ramón Esteve

La colección Vineyard, diseñada por Ramón Esteve, captura la esencia del estilo mediterráneo, combinando elegancia y comodidad en cada una de sus piezas. Inspirada en los viñedos y la vida al aire libre, esta colección es perfecta para crear ambientes relajados y acogedores.

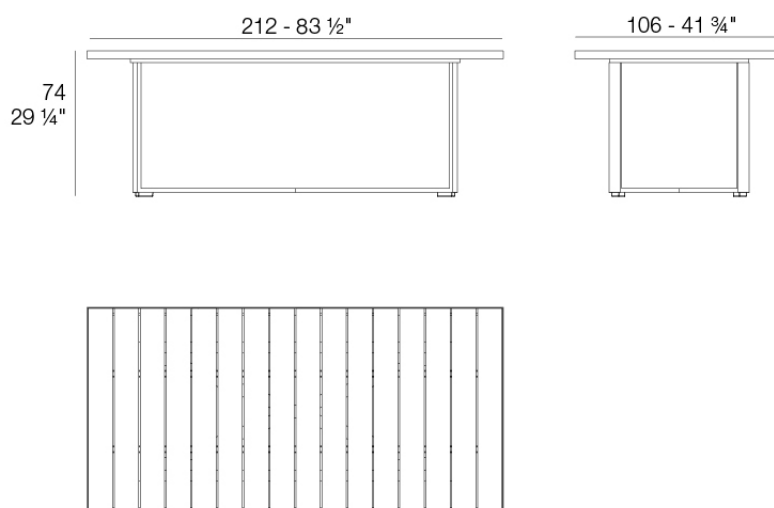


## Info

---

### Description

Weight: 32 Kg



Versión con patas  
Leg version

## Finishes

---

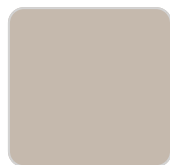
### acabados

---

ALUMINIO  
Ref. 54505ZSU



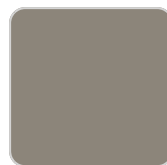
white



ecru



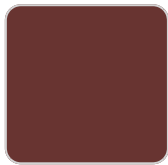
smoked



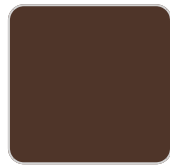
tortora



cream



garnet



brown



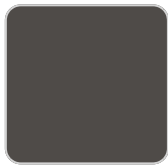
green



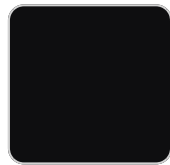
blue



gray



anthracite

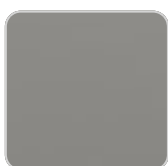


black

### panel/top

---

Solid Core  
Ref. 54505AA



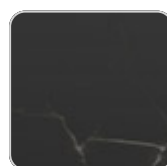
smoked



ecru stone



tortora stone



black stone

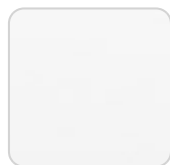


gray stone

# VONDOM



white stone



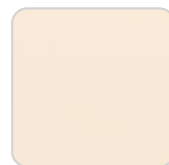
white (white edge)



ecru



tortora



cream



garnet



brown



green



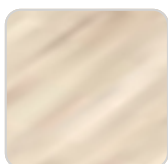
blue



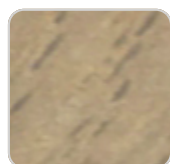
anthracite

## Solid Core wood

Ref. 54505AA



oak1



oak2

## Teca

Ref. 54505AA



natural teka



weathered teka

## Ambients

---

