

## Frame mesa aluminio 250x100x74

por Ramón Esteve

La colección outdoor Frame de Vondom, diseñada por Ramón Esteve, nace de la generación de formas serenas y atemporales valiéndose del marco como geometría elemental. Motivado por las infinitas posibilidades que nos ofrece el material, empleando una tecnología avanzada, se exploran los límites de éste.



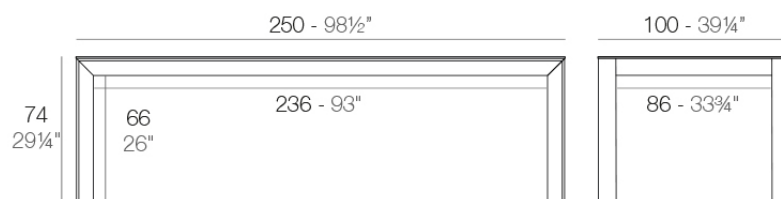
## Info

---

### Descripción

Aluminio extrusionado con base de fundición de aluminio lacado. Tablero en HPL ó Dekton. Apto para uso interior y exterior.

Peso: 52.88 Kg



FRAME Mesa 250x100cm  
FRAME Dinning Table 98 1/2"x39 1/4"

## Acabados

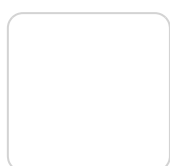
---

### acabados

---

ALUMINIO

Ref. 54247FB



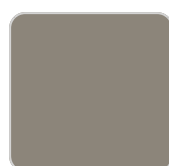
white



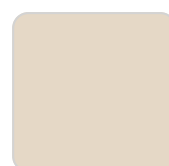
ecru



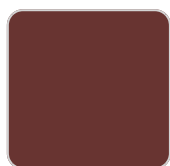
smoked



tortora



cream



garnet



brown



green



blue



gray



anthracite



black

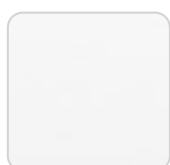
Perfil de aluminio en acabado lacado.

### tableros

---

HPL

Ref. VVAR02793



# VONDOM

white(black edge)

ecru(black edge)

black(black edge)

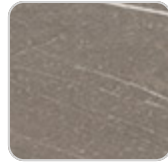
HPL black edge

Solid Core

Ref. VVAR02794



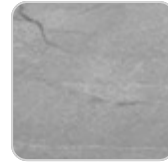
ecru stone



tortora stone



black stone



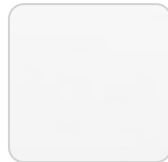
gray stone



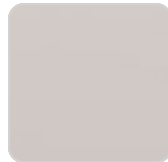
white stone



smoked



white (white edge)



ecru



tortora



cream



garnet



brown



green



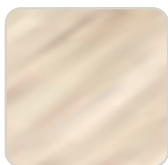
blue



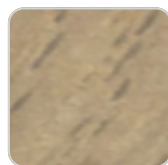
anthracite

Solid Core wood

Ref. VVAR02794



oak1



oak2

