

Frame mesa aluminio 200x100x74

por Ramón Esteve

La colección outdoor Frame de Vondom, diseñada por Ramón Esteve, nace de la generación de formas serenas y atemporales valiéndose del marco como geometría elemental. Motivado por las infinitas posibilidades que nos ofrece el material, empleando una tecnología avanzada, se exploran los límites de éste.

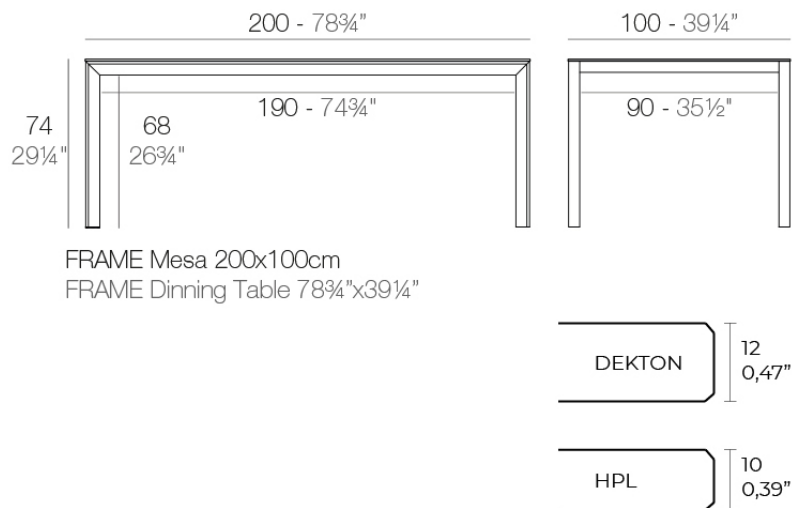


Info

Descripción

Aluminio extrusionado con base de fundición de aluminio lacado. Tablero en HPL ó Dekton. Apto para uso interior y exterior.

Peso: 39.15 Kg



Acabados

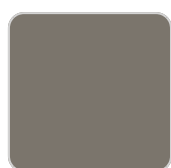
acabados

ALUMINIO

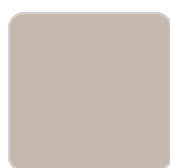
Ref. 54241FB



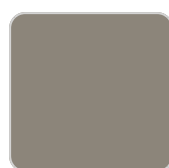
white



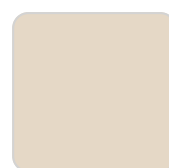
smoked



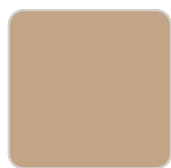
ecru



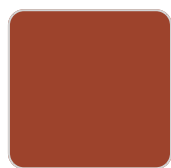
tortora



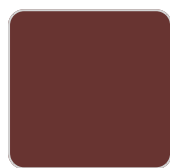
cream



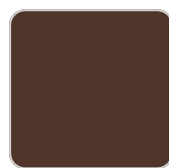
camel



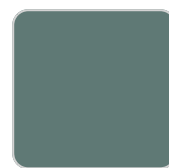
clay



garnet



brown



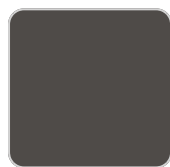
green



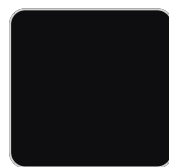
blue



gray



anthracite



black



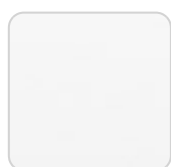
ocean

Perfil de aluminio en acabado lacado.

tableros

HPL

Ref. VVAR02595



VONDOM

white(black edge)

ecru(black edge)

black(black edge)

HPL black edge

Solid Core

Ref. VVAR02596



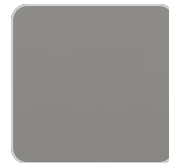
cream stone



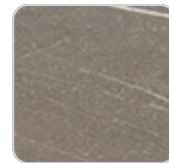
green stone



ecru stone



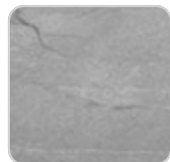
smoked



tortora stone



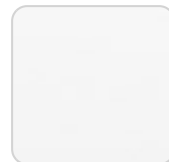
black stone



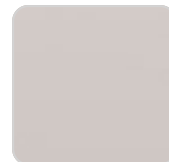
gray stone



white stone



white (white edge)



ecru



tortora



cream



camel



clay



garnet



brown



green



blue



gray



anthracite



ocean

Solid Core wood

Ref. VVAR02596

VONDOM



oak1



oak2

Ambients

