

Frame mesa aluminio 160x100x74

por Ramón Esteve

La colección outdoor Frame de Vondom, diseñada por Ramón Esteve, nace de la generación de formas serenas y atemporales valiéndose del marco como geometría elemental. Motivado por las infinitas posibilidades que nos ofrece el material, empleando una tecnología avanzada, se exploran los límites de éste.

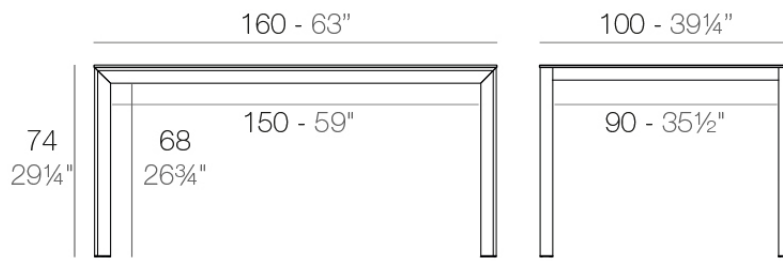


Info

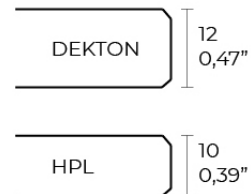
Descripción

Aluminio extrusionado con base de fundición de aluminio lacado. Tablero en HPL ó Dekton. Apto para uso interior y exterior.

Peso: 32.65 Kg



FRAME Mesa 160x100cm
FRAME Dinning Table 63"x39 1/4"

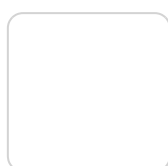


Acabados

acabados

ALUMINIO

Ref. 54240FB



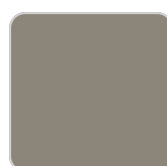
white



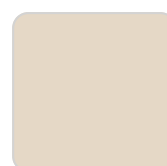
ecru



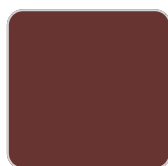
smoked



tortora



cream



garnet



brown



green



blue



gray



anthracite



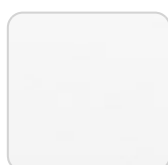
black

Perfil de aluminio en acabado lacado.

tableros

HPL

Ref. VVAR02593



VONDOM

white(black edge)

ecru(black edge)

black(black edge)

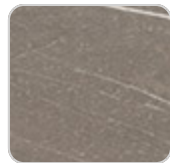
HPL black edge

Solid Core

Ref. VVAR02594



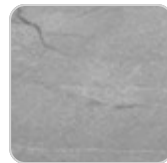
ecru stone



tortora stone



black stone



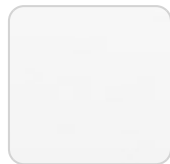
gray stone



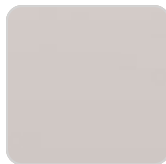
white stone



smoked



white (white edge)



ecru



tortora



cream



garnet



brown



green



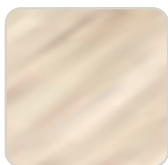
blue



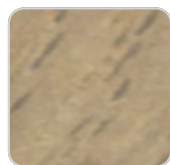
anthracite

Solid Core wood

Ref. VVAR02594



oak1



oak2

Dekton

Ref. VVAR02838

VONDOM



kelya



entzo



danae

Ambients

