

## Frame mesa aluminio 160x90x74

por Ramón Esteve

La colección outdoor Frame de Vondom, diseñada por Ramón Esteve, nace de la generación de formas serenas y atemporales valiéndose del marco como geometría elemental. Motivado por las infinitas posibilidades que nos ofrece el material, empleando una tecnología avanzada, se exploran los límites de éste.



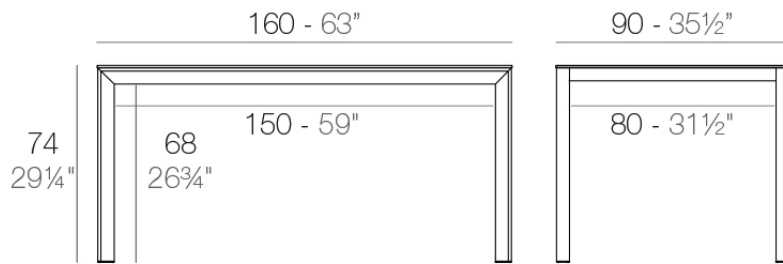
## Info

---

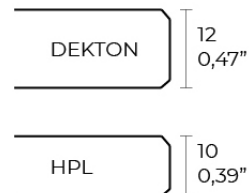
### Descripción

Aluminio extrusionado con base de fundición de aluminio lacado. Tablero en HPL ó Dekton. Apto para uso interior y exterior.

Peso: 30.13 Kg



FRAME Mesa 160x90cm  
FRAME Dining Table 63"x35 1/2"



## Acabados

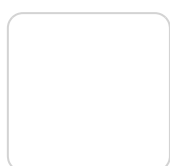
---

### acabados

---

#### ALUMINIO

Ref. 54238FB



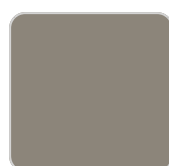
white



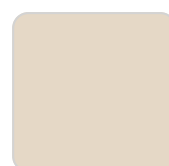
smoked



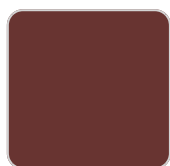
ecru



tortora



cream



garnet



brown



green



blue



gray



anthracite



black

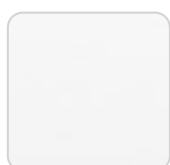
Perfil de aluminio en acabado lacado.

### tableros

---

#### HPL

Ref. VVAR02581



# VONDOM

white(black edge)

ecru(black edge)

black(black edge)

HPL black edge

Solid Core

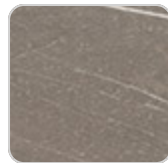
Ref. VVAR02582



smoked



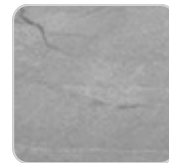
ecru stone



tortora stone



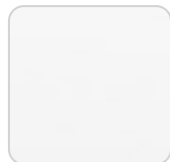
black stone



gray stone



white stone



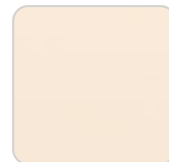
white (white edge)



ecru



tortora



cream



garnet



brown



green



blue



anthracite

Dekton

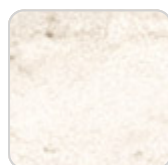
Ref. VVAR02835



kelya



entzo



danae

## Ambients

---

