

Pixel mesa 160x100x25

por Ramón Esteve

La colección Pixel, diseñada por Ramón Esteve para Vondom, transforma el concepto de mobiliario exterior con su inspiración en los pequeños elementos de color que componen una imagen. Pixel no solo aporta estilo, sino que también ofrece infinitas posibilidades de configuración, convirtiendo cualquier espacio en un lugar de creatividad y comodidad.

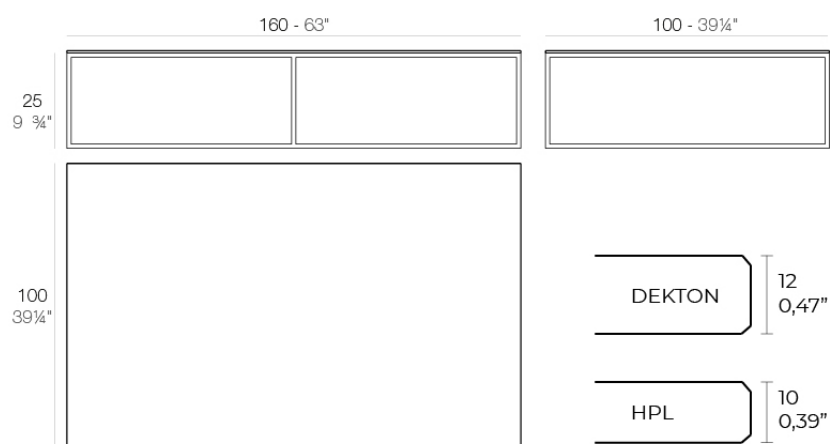


Info

Descripción

Aluminio extrusionado con base de fundición de aluminio lacado.

Peso: 34.01 Kg

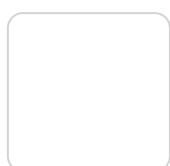


PIXEL Mesa Baja 160x100x25
PIXEL Low Table 63x39 1/4x9 3/4

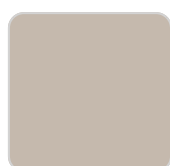
Acabados

acabados

ALUMINIO
Ref. 44319B



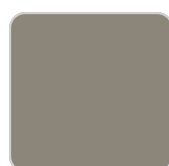
white



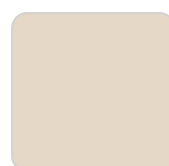
ecru



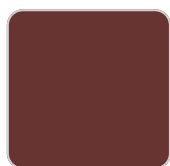
smoked



tortora



cream



garnet



brown



green



blue



gray



anthracite

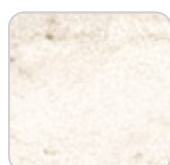
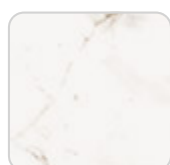
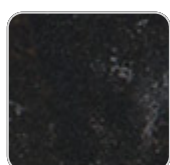


black

Perfil de aluminio en acabado lacado.

tableros

Dekton
Ref. VVAR03045



VONDOM

kelya

entzo

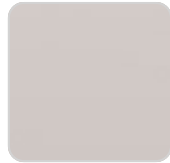
danae

HPL

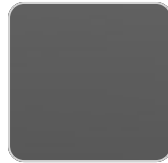
Ref. VVAR03050



white(black edge)



ecru(black edge)



black(black edge)

HPL black edge

Solid Core

Ref. VVAR03143



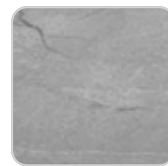
ecru stone



tortora stone



black stone



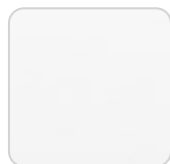
gray stone



white stone



smoked



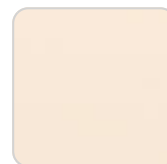
white (white edge)



ecru



tortora



cream



garnet



brown



green



blue



anthracite

Solid Core wood

Ref. VVAR03143

VONDOM



oak1



oak2

Ambients

