

A modern outdoor lounge area featuring a curved concrete overhang, a swimming pool, and contemporary furniture. The scene is set against a backdrop of greenery and a clear sky. The furniture consists of several armchairs and a coffee table, all in a light, neutral color. The overall aesthetic is clean and minimalist.

# VOIDDOM

Polyethylene

# Polyethylene

It is one of the most versatile plastics that exist, with multiple advantages over other materials.

At Vondom we use this material through the rotational moulding technique to manufacture different product lines, such as planters and furniture for indoors and outdoors.

We are currently the company with the widest catalogue of design products made of polyethylene.



## Lightweight

Due to their low density, parts made of polyethylene are very light and bulky, which makes them easy to transport.



# Waterproof

Due to its impermeability and hollow bodies, it allows the possibility of integrating interior lighting achieving IP65 protection.



# Resistance

Parts made of this material are distinguished by their high quality, strength and rigidity. It is impact resistant, which guarantees a durable product that is difficult to break.

The material is UVI resistant. UV8 factor, equivalent to 8,000 hours of sunlight in Florida. It guarantees a prolonged use, withstanding the most extreme weather conditions (-60°C to + 80°C) and preserving the colours during its useful life.



# Simple maintenance

In order to achieve the effects and finishes that characterise Vondom products, we research and implement the addition of chemical compounds, one of the most characteristic being "Easy Clean". Facilitating the cleaning and maintenance of each piece.

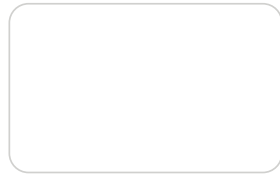


## Sustainable material

Low density polyethylene is an environmentally friendly material that has minimal environmental impact due to its long durability and 100% recyclability.



Basic



White 2001  
White 2001



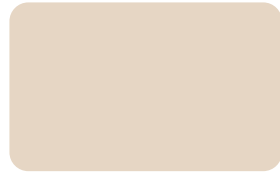
Gray 2005  
Steel 2005



Anthracite 2006  
Anthracite 2006



Black 2002  
Black 2002



Cream  
Crema 2017



Camel 2020  
Beige 2007



Ecrú 2003  
Ecrú 2003



Tortora 2004  
Taupe 2004



Clay 2022  
Red 2014



Garnet 2015  
Purjai Red 2015



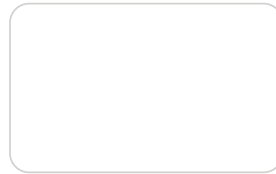
Brown 2008  
Bronze 2008



Blue 2018  
Notte Blue 2018

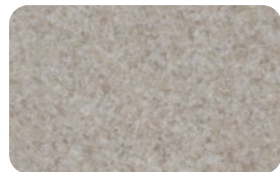


Green 2016  
Modo Green 2016

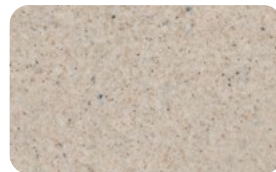


Ice 2101  
Ice 2101

Granite effect / Efecto granito



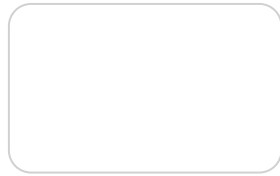
Ecrú 2030



Cream 2031



Lacquered



White 3101  
White 3101



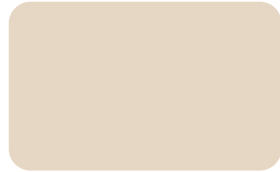
Gray 3105  
Steel 3105



Anthracite 3106  
Anthracite 3106



Black 3102  
Black 3102



Cream 3117  
Crema 3117



Camel 3120  
Beige 3107



Ecrú 3103  
Ecrú 3103



Tortora 3104  
Taupe 3104



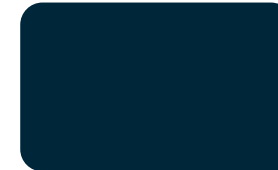
Clay 3122  
Red 3114



Garnet 3113  
Purjai Red 3113



Brown 3125  
Bronze 3108



Blue 3118  
Notte Blue 3118



Green 3116  
Modo Green 3116

# Clean & Care

Our production is governed by the standards of our quality assurance system ISO 9001:2015 and environmental system ISO 14001:2004. And we use only the highest quality materials to guarantee a long product life.

Steps to clean polypropylene furniture:

1. Spray a grease remover on the surface to be cleaned.
2. Rub with a damp cloth and water.
3. Rinse with plenty of water using a pressurised water system.

Caution! Do not use the pressure washer on upholstery and lacquered finishes.

4. Leave to dry outside.

# VONDOM

[info@vondom.com](mailto:info@vondom.com)

+34 962 39 84 86

[vondom.com](http://vondom.com)